



14 SKUS TOTAL | PRECUTS - 14 SKUS | K / KNIT - 11 SKUS



CS3-01 CAMPOUT BLOCKS



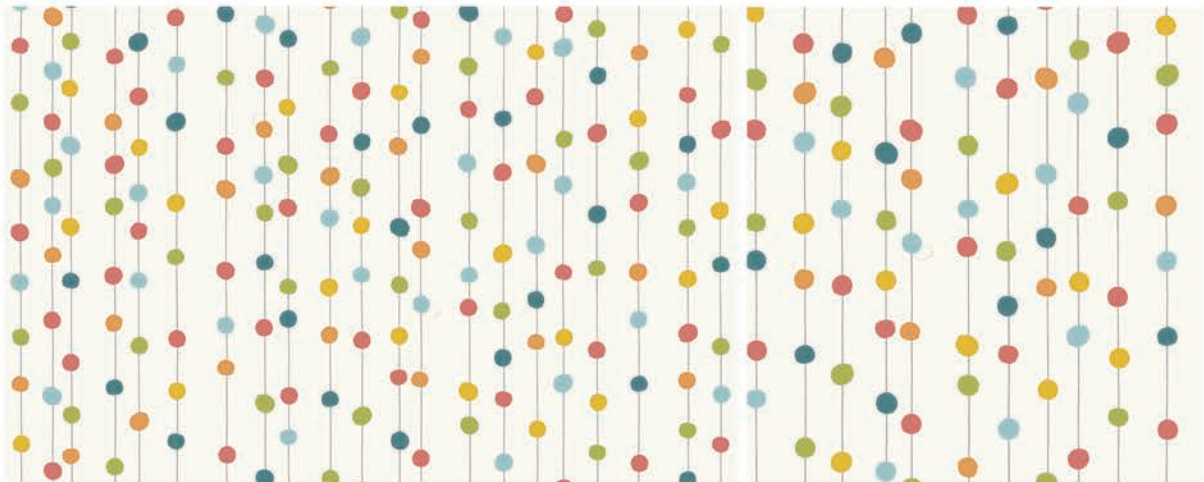
100% SCALE



CS3-02 CAMPOUT MAIN



100% SCALE

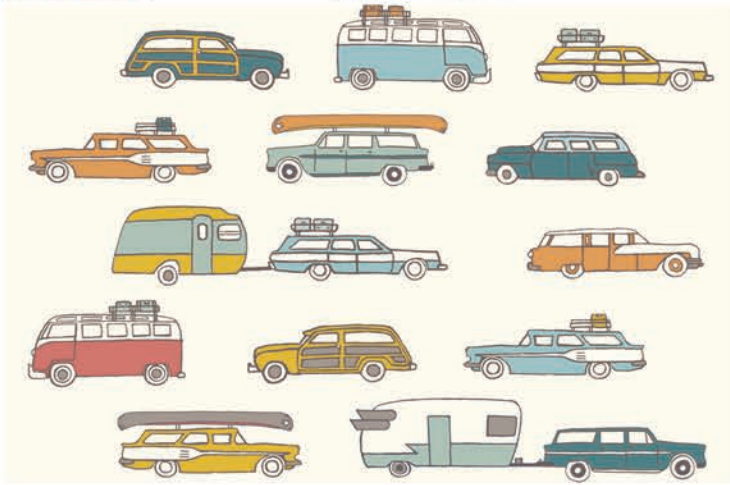


CS3-03 BOBBERS MULTI | K-CS3-03

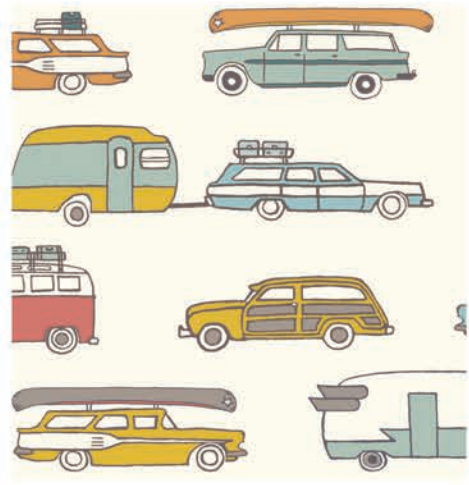
100% SCALE



14 SKUS TOTAL | PRECUTS - 14 SKUS | K / KNIT - 11 SKUS



CS3-04 RIVER RALLY | K-CS3-04



100% SCALE



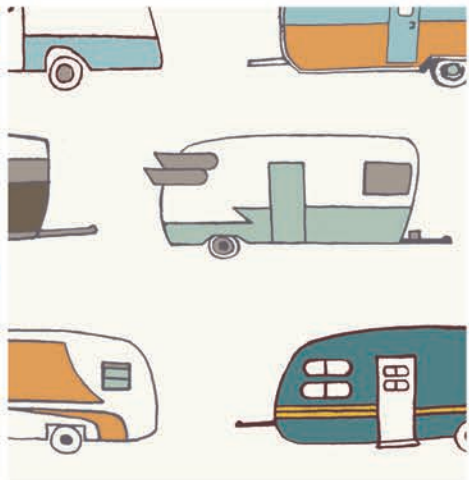
CS3-05 LEAVES | K-CS3-05



100% SCALE



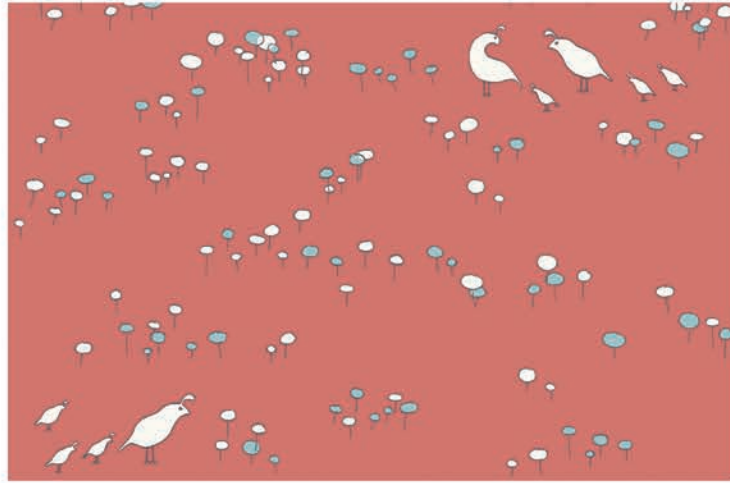
CS3-06 CAMPER RALLY | K-CS3-06



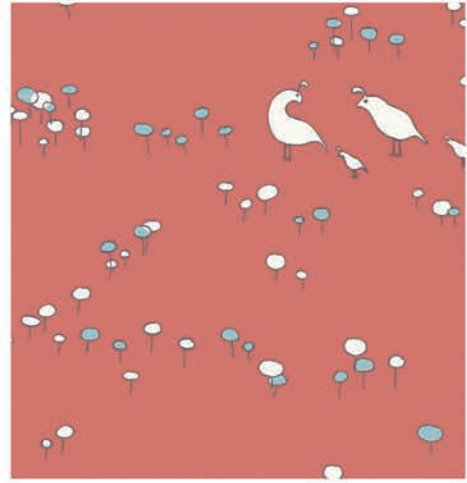
100% SCALE



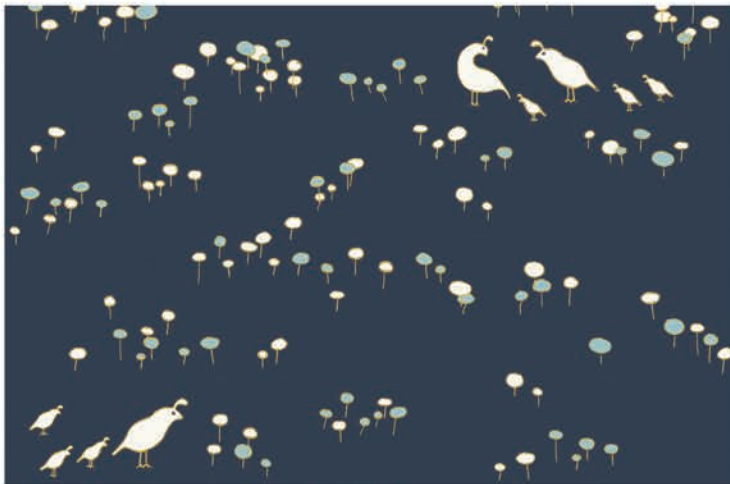
14 SKUS TOTAL | PRECUTS - 14 SKUS | K / KNIT - 11 SKUS



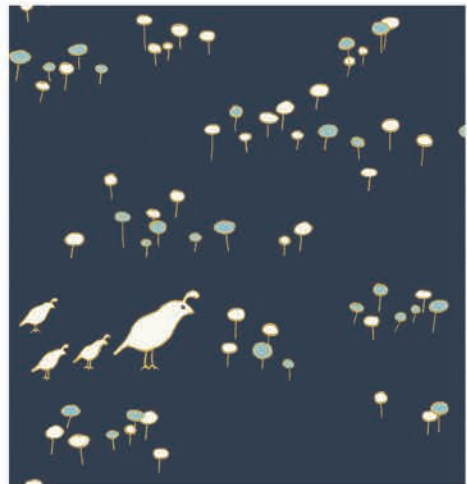
CS3-07 QUAIL RUN CORAL | K-CS3-07



100% SCALE



CS3-07 QUAIL RUN DUSK | K-CS3-07



100% SCALE



CS3-08 MEADOW RUN | K-CS3-08



100% SCALE



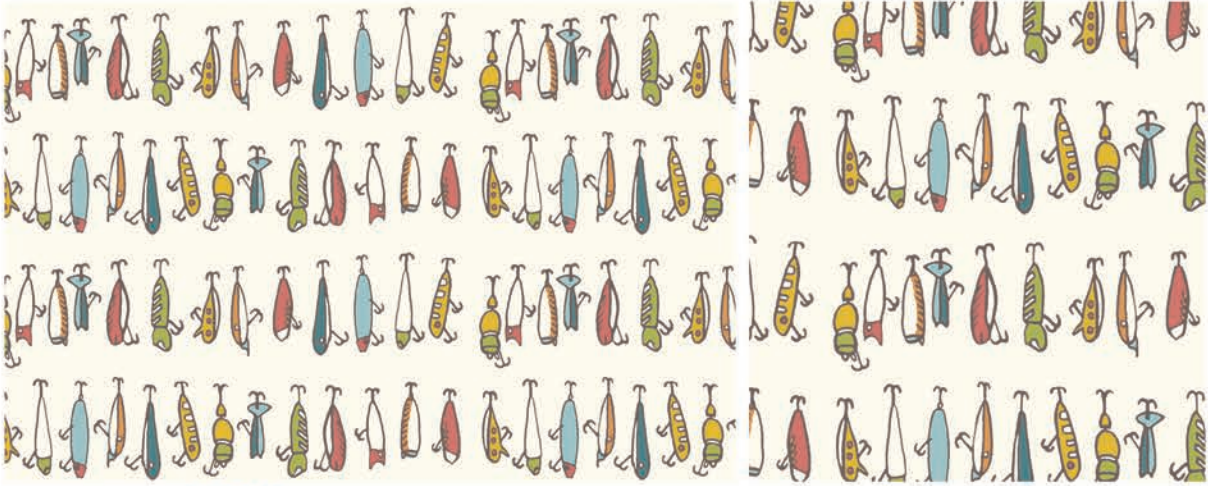
14 SKUS TOTAL | PRECUTS - 14 SKUS | K / KNIT - 11 SKUS



CS3-09 LANTERNS



100% SCALE

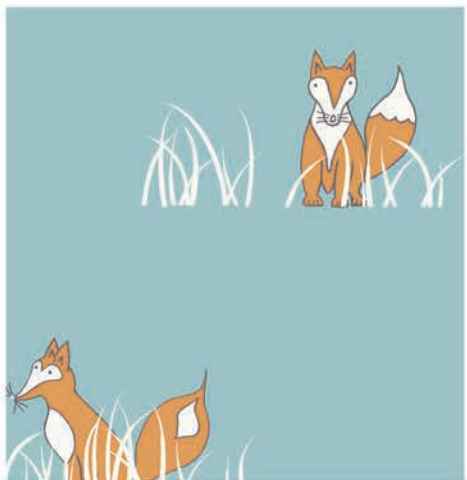


CS3-10 LURES | K-CS3-10

100% SCALE



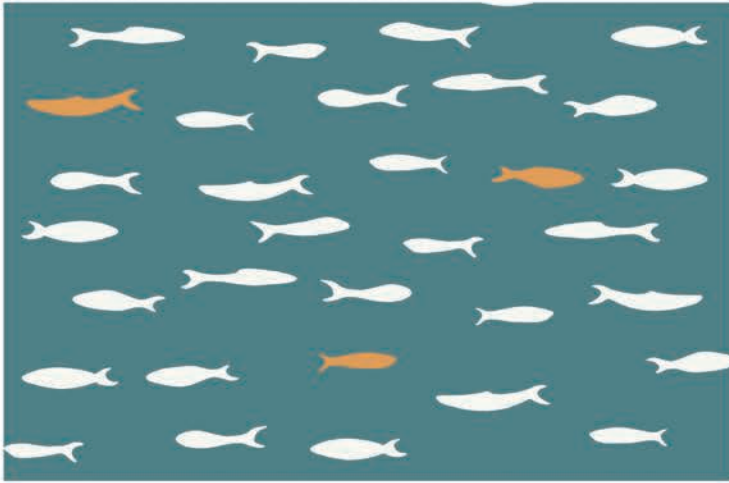
CS3-11 SLY FOX | K-CS3-11



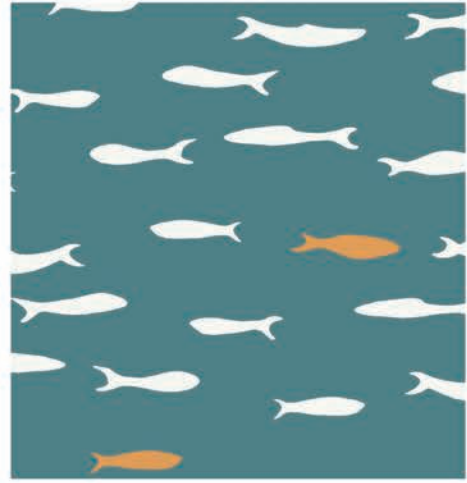
100% SCALE



14 SKUS TOTAL | PRECUTS - 14 SKUS | K / KNIT - 11 SKUS



CS3-12 BLUE SCHOOL | K-CS3-12



100% SCALE



CS3-13 FLIGHT in BROWN | K-CS3-13



100% SCALE

*cynthia mann*



*jason rector*



**about JAY-CYN DESIGNS**

Cynthia Mann is the owner and creative visionary behind Birch Fabrics. An organic fabric enthusiast, and a momma to two beautiful boys, Birch Fabrics was born in 2009, out of a genuine love for organic fabric and a lack of it on her neighborhood fabric store shelves. Cynthia believes that with heart-felt, assertive action, each person can contribute to a healthier planet. You'll find Cynthia on the beach playing frisbee with her two boys, and her dog Charley. Today Cynthia is one half of the Jay-Cyn design team, and serves as the Art Director for Birch Fabrics.

Jason Rector started off as a Multimedia Designer in the Bay Area, after many years of a diverse design background Jason got on board with Cynthia in starting Birch Fabrics as the Lead Designer. Now after what seems like such a long journey it's been a personal pleasure to have seen Birch grow into such an amazing company and to have such wonderful employees to manage and bring Birch into a new era. Jay-Cyn Designs were accepted into the fabric world with open arms and Jason continues to thrive in the partnership he shares with Cynthia and the work he does with the talented group of people the company has surrounded itself with.