

Apple Basket

A FREE QUILT PATTERN!

A quick sew perfect to show off your favorite prints! We've featured Jenny Ronen's newest collection, Whistle in a throw size pictured, with measurements included for crib, twin, and full/queen.

Happy Quilting!



 birchfabrics

100% ORGANIC FABRIC, MADE WITH *love*, NOT PESTICIDES.

www.birchfabrics.com | info@birchfabrics.com

FABRIC REQUIREMENTS

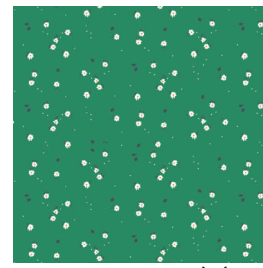
Featuring fabric from



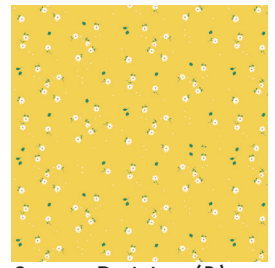
Sunny Forest (A)
JR-01



Tree House (A)
JR-02



Forest Daisies (B)
JR-03-FOREST



Sunny Daisies (B)
JR-03-SUNNY



Playtime (A)*
JR-04



Apples (A)
JR-05



Mushrooms (A)
JR-06



Tiny Steps Pink (B)
JR-07-PINK



Tiny Steps Blue (B)
JR-07-BLUE



Solid Shroom (C) - Sashing & Binding



Solid Regatta - Portion of backing.

TOOLS

- coordinating thread
- rotary cutter
- cutting mat
- iron / ironing board
- batting



| FINISHED MEASUREMENTS | | MAIN FABRIC | SASHING | BINDING | BACKING |
|-----------------------|-----------|-------------|--------------------------------|---------|---------|
| Crib | 35" x 45" | (6) FQs | 1/3 yd, (28) 4.5 x 2.5" pieces | 1/2 yd | 1.5 yd |
| Throw | 46" x 68" | (9) FQs | 1/2 yd, (59) 4.5 x 2.5" pieces | 1/2 yd | 4 yd |
| Twin | 58" x 88" | (9) 1/2 yd | 7/8 yd, (99) 4.5 x 2.5" pieces | 1/2 yd | 5 yd |
| Full / Queen | 82" x 96" | (9) 3/4 yd | 1.25 yd, (156) 4.5 x 2.5" | 3/4 yd | 5.5 yd |

*For the throw size sample quilt backing, we used a generous 2 yard piece of Playtime and a 1/2 yard of Solid Regatta.

Seam allowance: 1/4"

WOF: width of fabric.

CUTTING DIRECTIONS

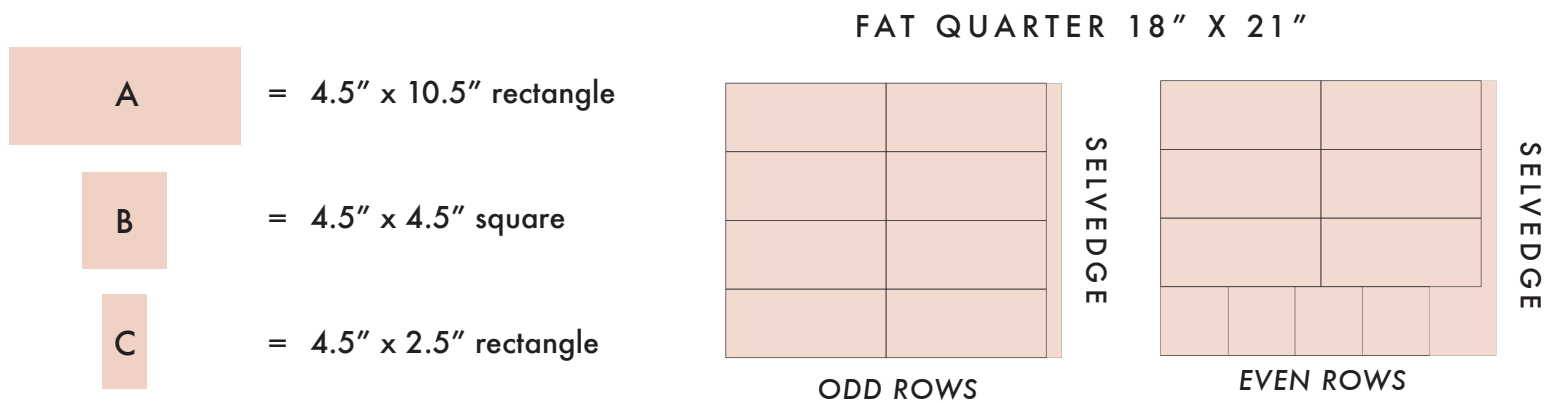
NOTE: Use the chart on page 2 and mock ups on pages 4-7 to determine how many odd and even rows, and how many pieces needed per row.

ODD ROWS: One FQ yields (8) 4.5" x 10.5" pieces, or each 1/8 yd yields (4) 4.5" x 10.5" pieces.

EVEN ROWS: One FQ yields (6) 4.5" x 10.5" pieces, and (4) 4.5" square pieces. 1/8 yd yields (3) 4.5" x 10.5" pieces and (2) 4.5" square pieces.

From your solid sashing fabric, cut 2.5" x WOF strips. Cross cut strips into 2.5" x 4.5" pieces. These make up your "C" sashing pieces. The amount you'll need for each size is noted in the chart on page 2. (1) 2.5" x WOF strip yeilds (9) 2.5" x 4.5" pieces.

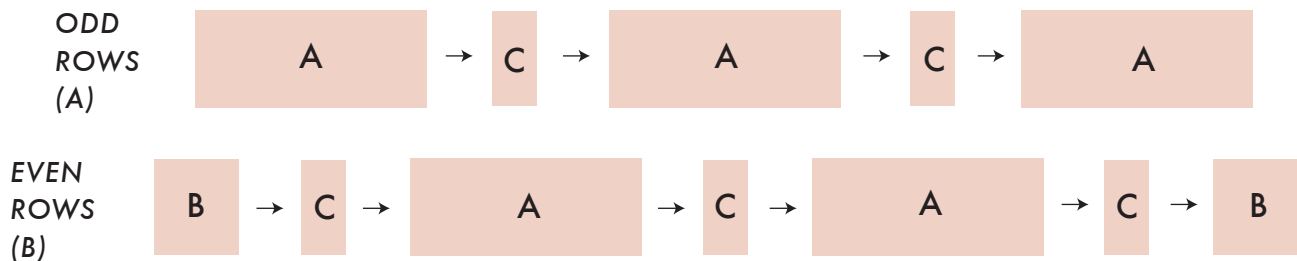
If you are choosing your own fabric, note that for CRIB and THROW sizes, a 1/4 yard (or FQ) will get you TWO rows. For the TWIN and FULL/QUEEN size, a 1/4 yd (or FQ) will get you ONE row.



SEWING & ASSEMBLY

Use the guide below to illustrate how odd and even rows sew together. Once rows are complete, sew your rows to make your complete quilt top. Press seams toward the darker fabric in all instances.

CRIB SIZE EXAMPLE, ADD (A) AND (C) BLOCKS IN BEWTEEN TO MAKE THE LARGER SIZES.



BACKING: Cut the 1/2 yd piece into two 1/4 yd pieces, then sew along the selvedge to make a 9" x approx 88" strip. Press seam as desired. Sew to one of the selvedge edges of the 2 yard piece.

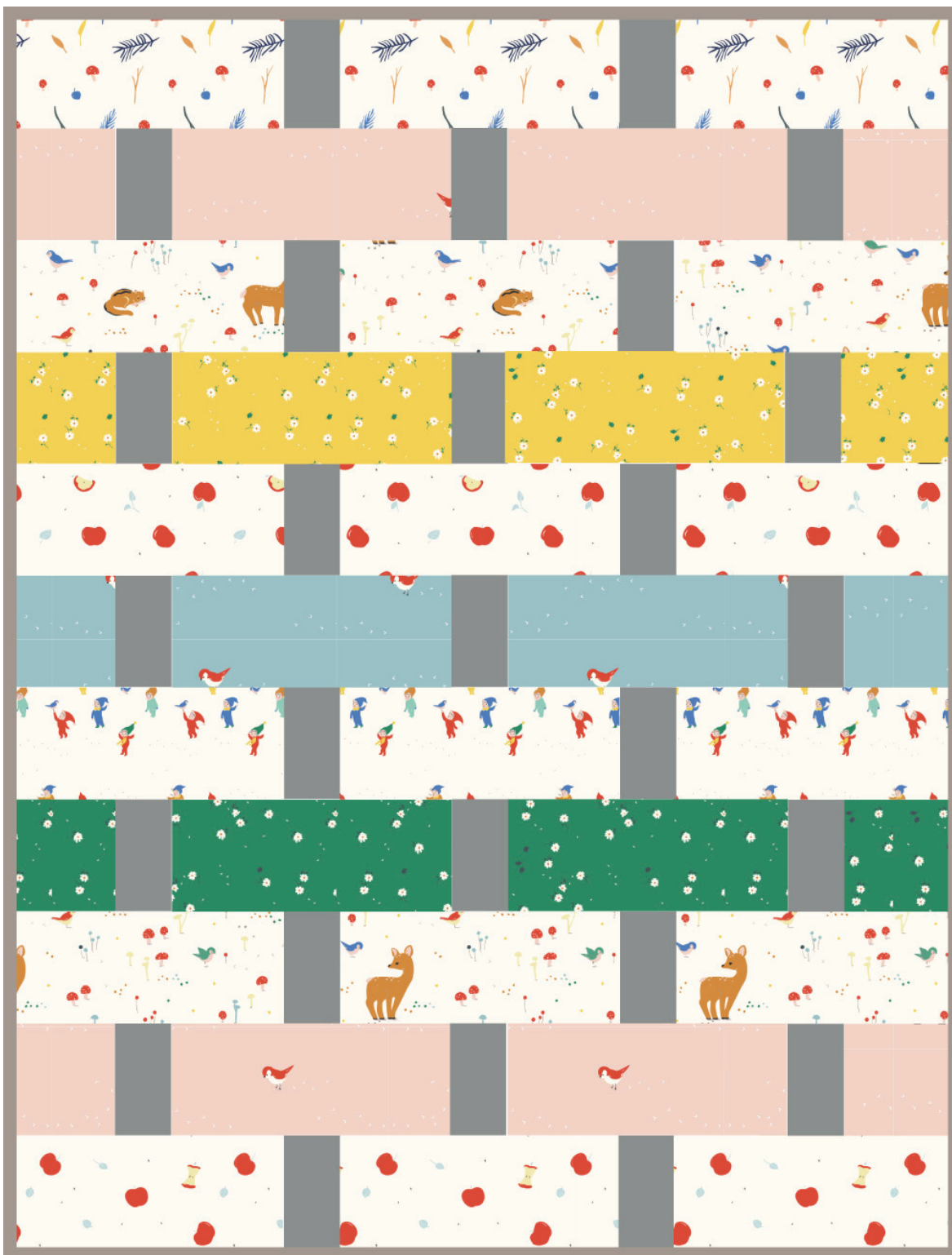
What are you sewing? We want to see! Tag #applebasketquilt
Follow us on IG @birchfabrics for more inspiration!

CRIB QUILT (35" x 45")

6 ODD ROWS: (3) "A" pieces per row, (18) total.

5 EVEN ROWS: (2) "A" & "B" pieces per row, (10) of each total.

(3) 2.5" x WOF strips, (27) "C" sashing pieces total.

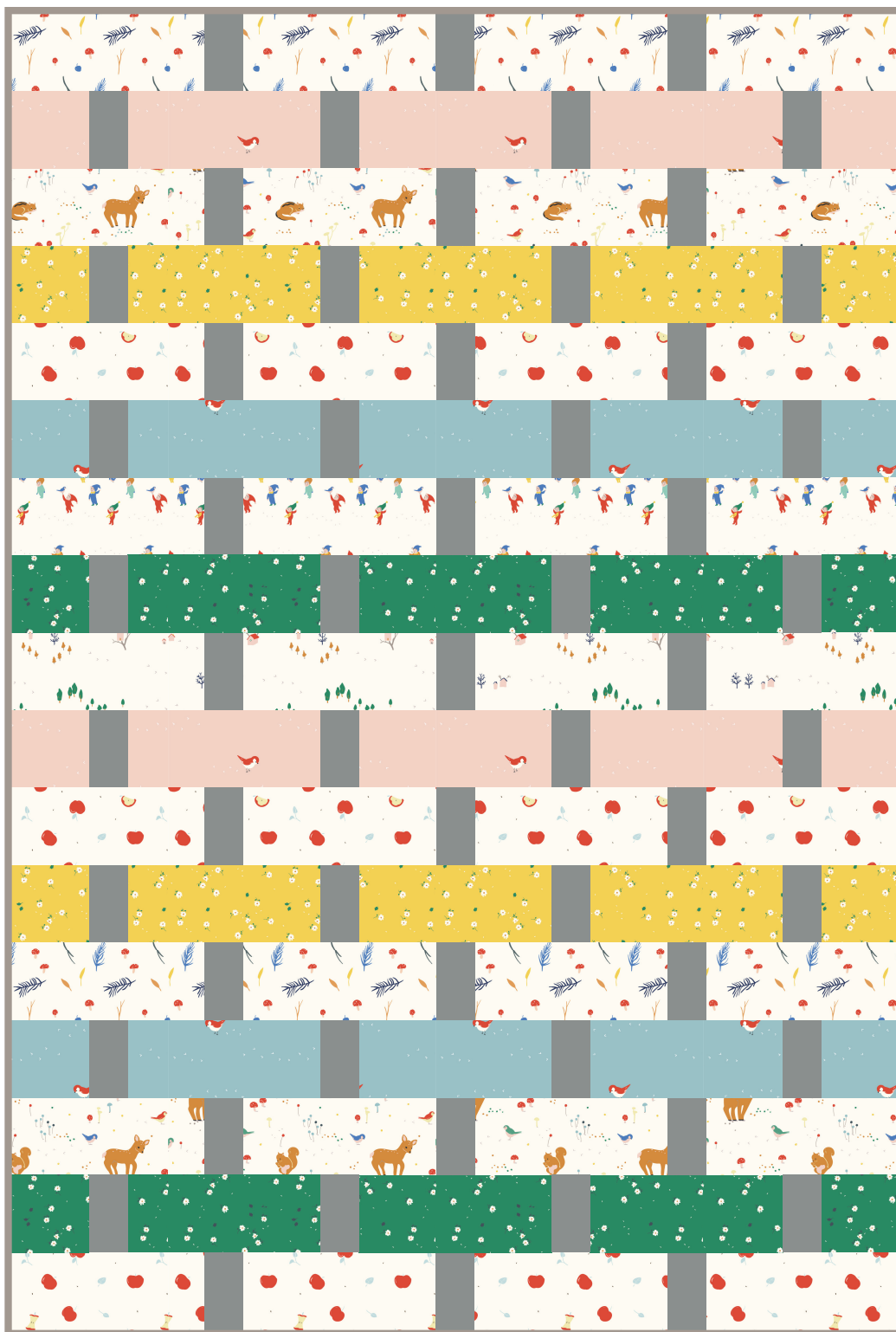


THROW QUILT (46" x 68")

9 ODD ROWS: (4) "A" pieces per row, (36) total.

8 EVEN ROWS: (3) "A" pieces, (24) total & (2) "B" strips per row, (16) total.

(7) 2.5" x WOF strips, (59) "C" sashing pieces total.

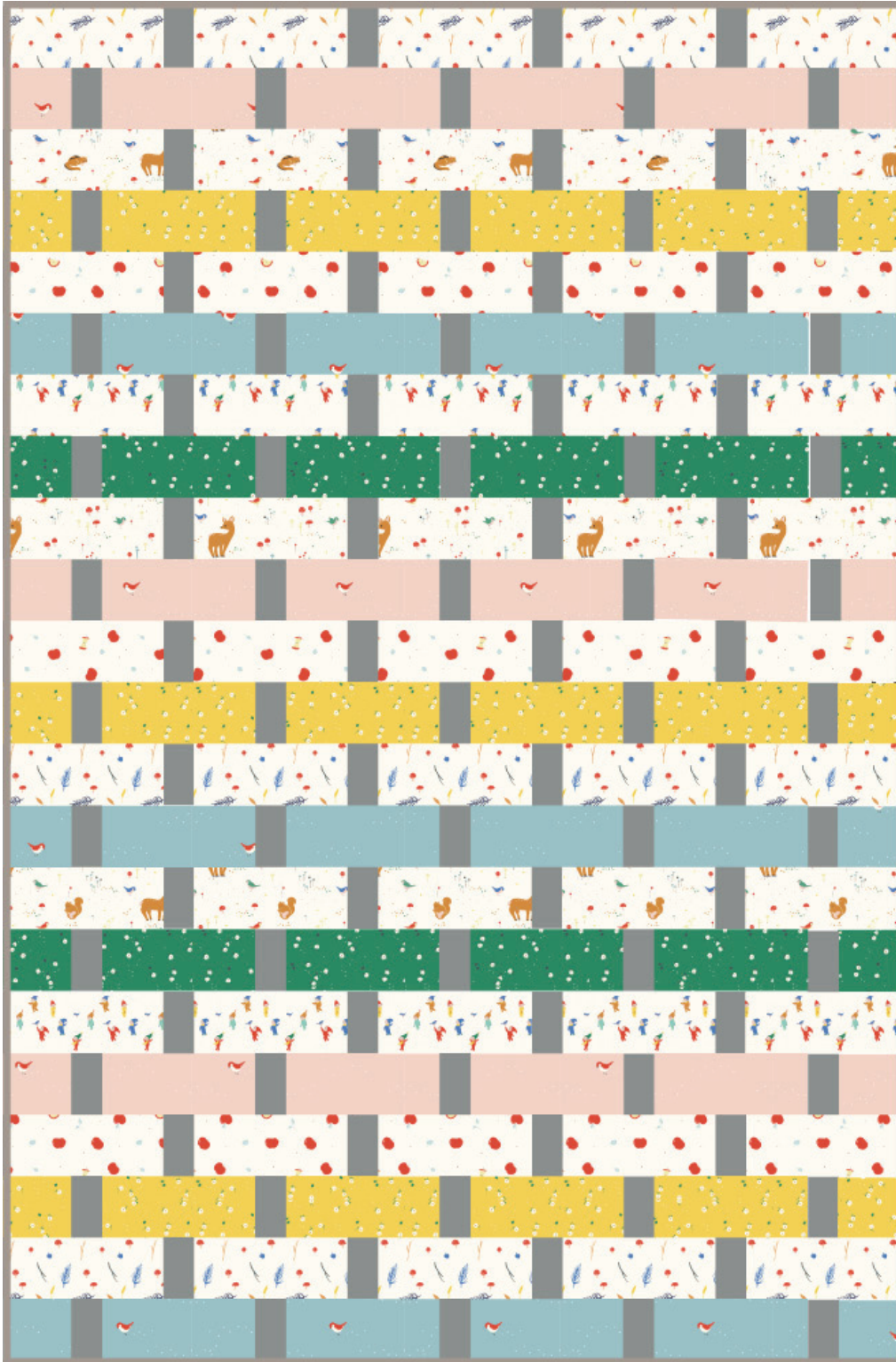


TWIN QUILT (58" x 88")

11 ODD ROWS: (5) "A" pieces per row, (55) total.

11 EVEN ROW: (4) "A" pieces per row, (44) total & (2) "B" pieces per row, (22) total.

(11) 2.5" x WOF strips, (99) "C" sashing pieces total.

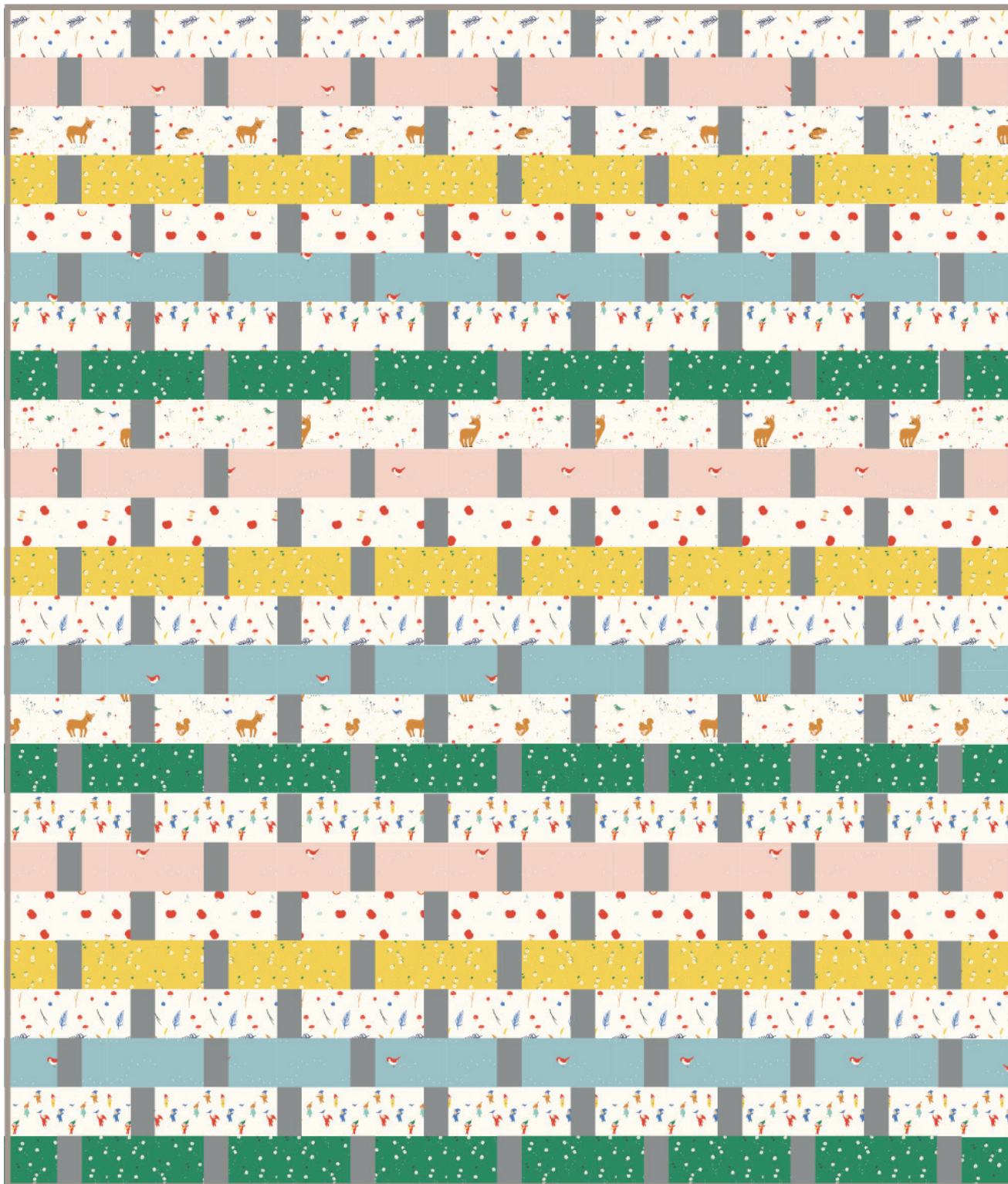


FULL/ QUEEN QUILT (82" x 96")

12 ODD ROWS: (7) "A" pieces per row, (84) total.

12 EVEN ROWS: (6) "A" pieces per row, (72) total & (2) "B" pieces per row, (24) total.

(18) 2.5" x WOF strips, (156) "C" sashing pieces total.



COLOR YOUR OWN - IN ANY SIZE!

Go for it - run wild! Tag your creation #applebasketquilt!

Spot an error? Let us know! → info@birchfabrics.com

