

Maritime Hoodie

Free PDF Pattern feat. Maritime



THE CRAFTY KITTY

patterns & tutorials

Maritime Hoodie

[illegible]

The Maritime hooded sweatshirt pdf pattern features an oversized, wrap neck hood plus optional double welt front pocket.

The organic interlock fabrics create a really cosy feel and with 3 sleeve options will take you through a wide range of weather. Available in sizes 2-9 years.



Age (years)	Chest		Waist		Height	
	cm	inches	cm	inches	cm	inches
2-3	55	21.75	52	20.5	98	39
3-4	56	22	53	21	104	41
4-5	57	22.5	54	21.25	110	43
5-6	58	23	55	21.75	116	46
6-7	61	24	56.5	22.5	122	48
7-8	64	25.25	58	23	128	50
8-9	67	26.5	59.5	23.25	134	53

SIZE CHART

Please reference this size chart when choosing the size to make for your child.

SUPPLIES

- ☐ 2 yards Maritime main knit
- ☐ 0.5 yards Octo school purple knit
- ☐ Clear elastic tape

SKILL LEVEL

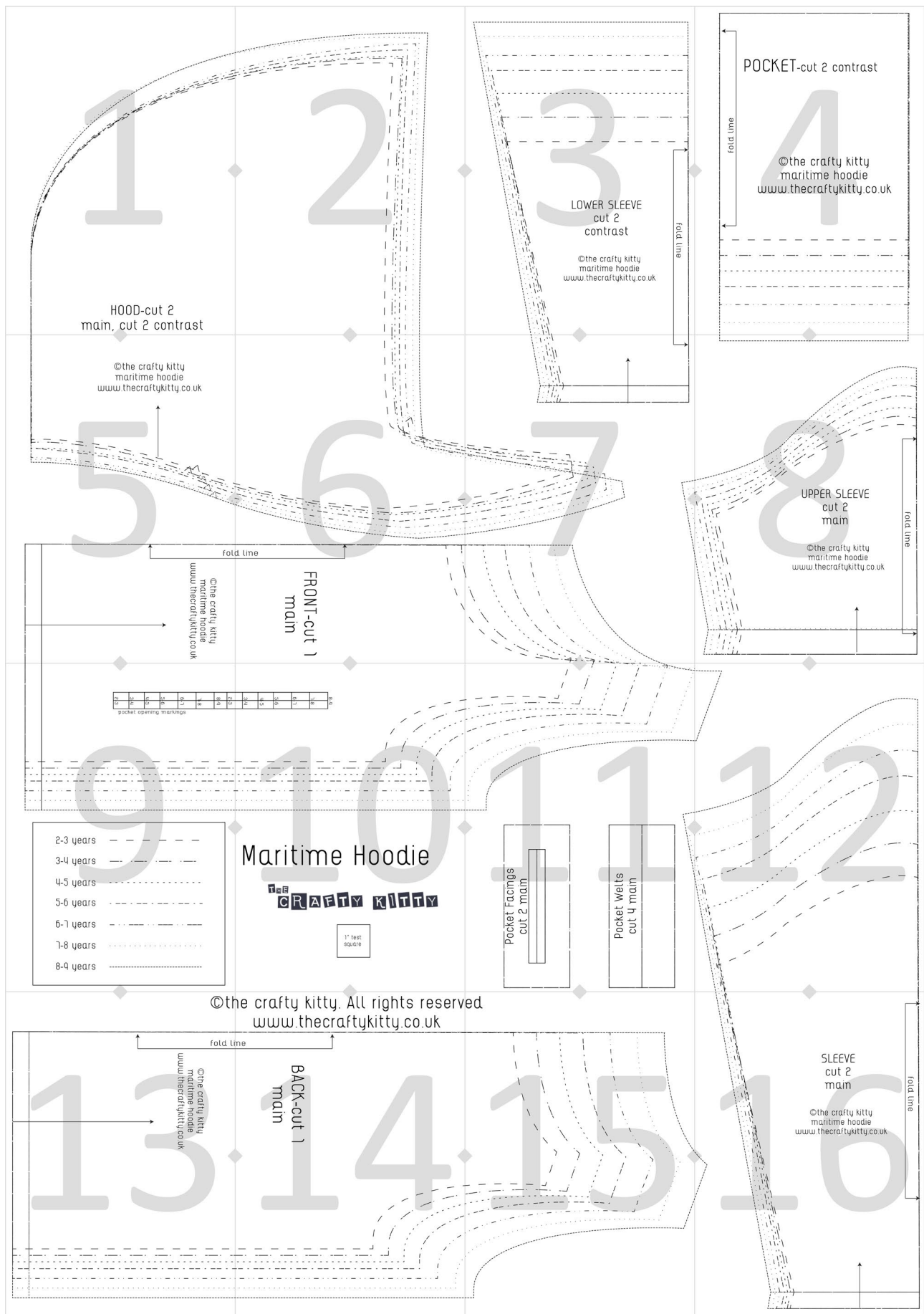


Maritime main
organic knit
Birch Fabrics

Octo school Purple
organic knit
Birch Fabrics



TILING LAYOUT



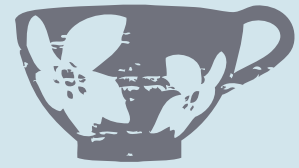
PREPARATION

Print and assemble free hooded sweatshirt pdf pattern.

Pre-wash and dry fabric.

Cut out pattern pieces from fabric and add any markings.

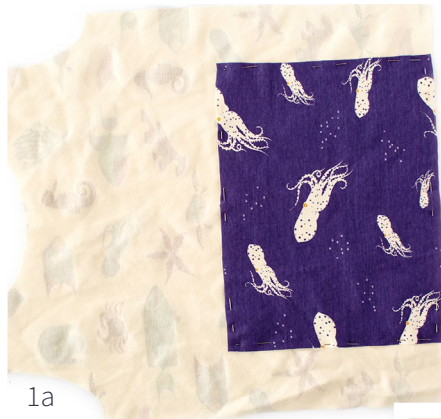
Stabilise neckline and shoulders using clear elastic tape/knit interfacing.



POCKET (OPTIONAL)

Pattern uses 1/4" seam allowance unless otherwise stated. For most seams use either an overlocker, overlock stitch OR a stretch stitch and finish raw edge with zig zag.

- 1 Pin one of the pocket interiors wrong side facing (WSF) to the wrong side of the sweatshirt front, centred and aligned with the bottom edge. Pin the pocket facings RSF (right sides facing) in place on the front of the sweatshirt and sew around the box marked.



- 2 Cut the centre line of the facing and cut the diagonal lines to the corner. Flip facing to the reverse of the sweatshirt and press. Repeat steps 1 and 2 for other pocket facing.



- 3 Baste 2 of the welt pieces along the centre line RSF. Press open.



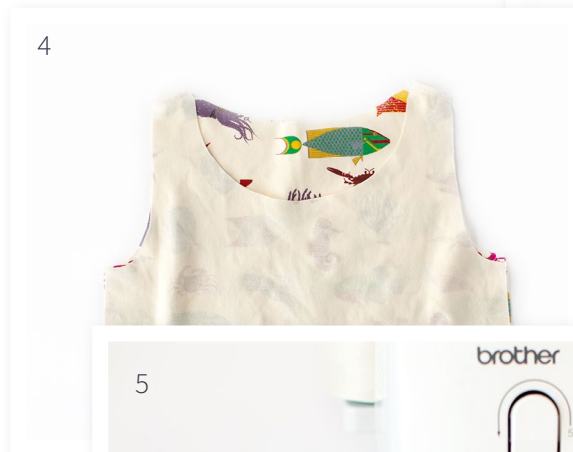
POCKET (OPTIONAL) CONT.

- 4** Pin the welts aligned with the centre of the pocket opening on the reverse of the sweatshirt. Top stitch close to the edge of the opening using a stretch stitch.
- 5** Overlock the top and inside edge of the welts and then top stitch onto the pocket lining. Repeat steps 3-5 for other pocket opening.
- 6** Place the other pocket lining RSF on top and then overlock the top and 2 sides of the pocket. Baste the bottom of the pocket to the bottom of the sweatshirt front (using a zig zag stitch) and then unpick the basting stitches to open up the welts.



SWEATSHIRT

- 1** Sew top seam right sides facing (rsf) on main hood. repeat for contrast hood lining.
- 2** Sew main hood to contrast hood lining (rsf) along front seam.
- 3** Turn right side out and press. Baste hood and lining together along neck seam using zig zag.
- 4** Sew front and back of sweatshirt together RSF along shoulder seam.
- 5** Pin hood to neck of sweatshirt RSF, lining up notches at shoulder seam. Sew Hood to sweatshirt
- 6** Sew sleeve to armhole of sweatshirt RSF and repeat for other sleeve. *If you are making the double sleeve you need to sew the upper and lower sleeve together first RSF and then fold the upper sleeve so that there is a 3/4" overlap and top stitch on the right side.*



7 Sew side seam of sweatshirt from cuff to hem RSF and repeat for other side.

8 Press under 1/2" on cuffs*, finish raw edge with overlock or zigzag stitch and top stitch with stretch stitch (or use cover stitch). *3/4" if using short sleeve.

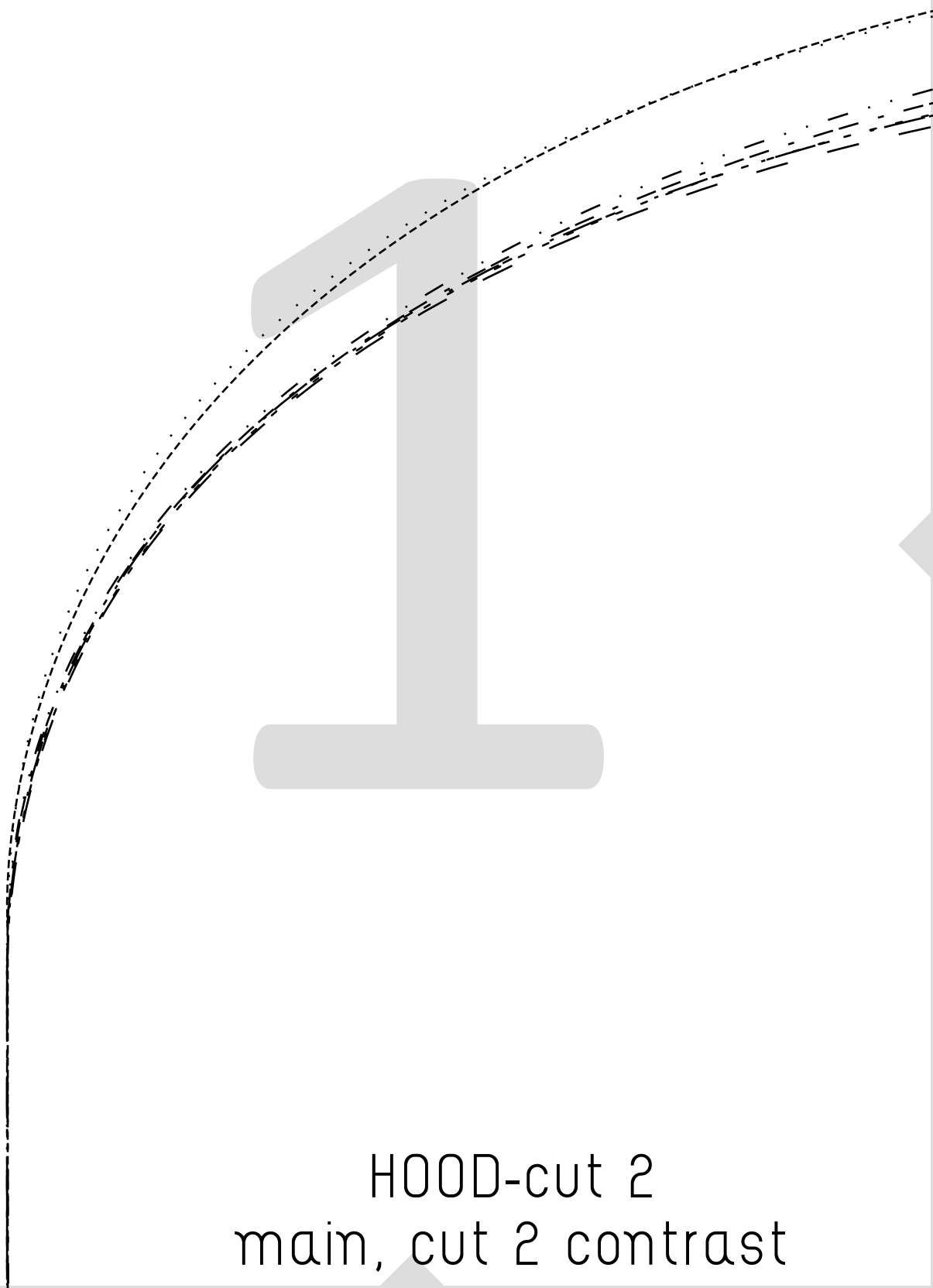
9 Press under 1/2" on hem, finish raw edge with overlock or zigzag stitch and top stitch with stretch stitch (or use cover stitch).



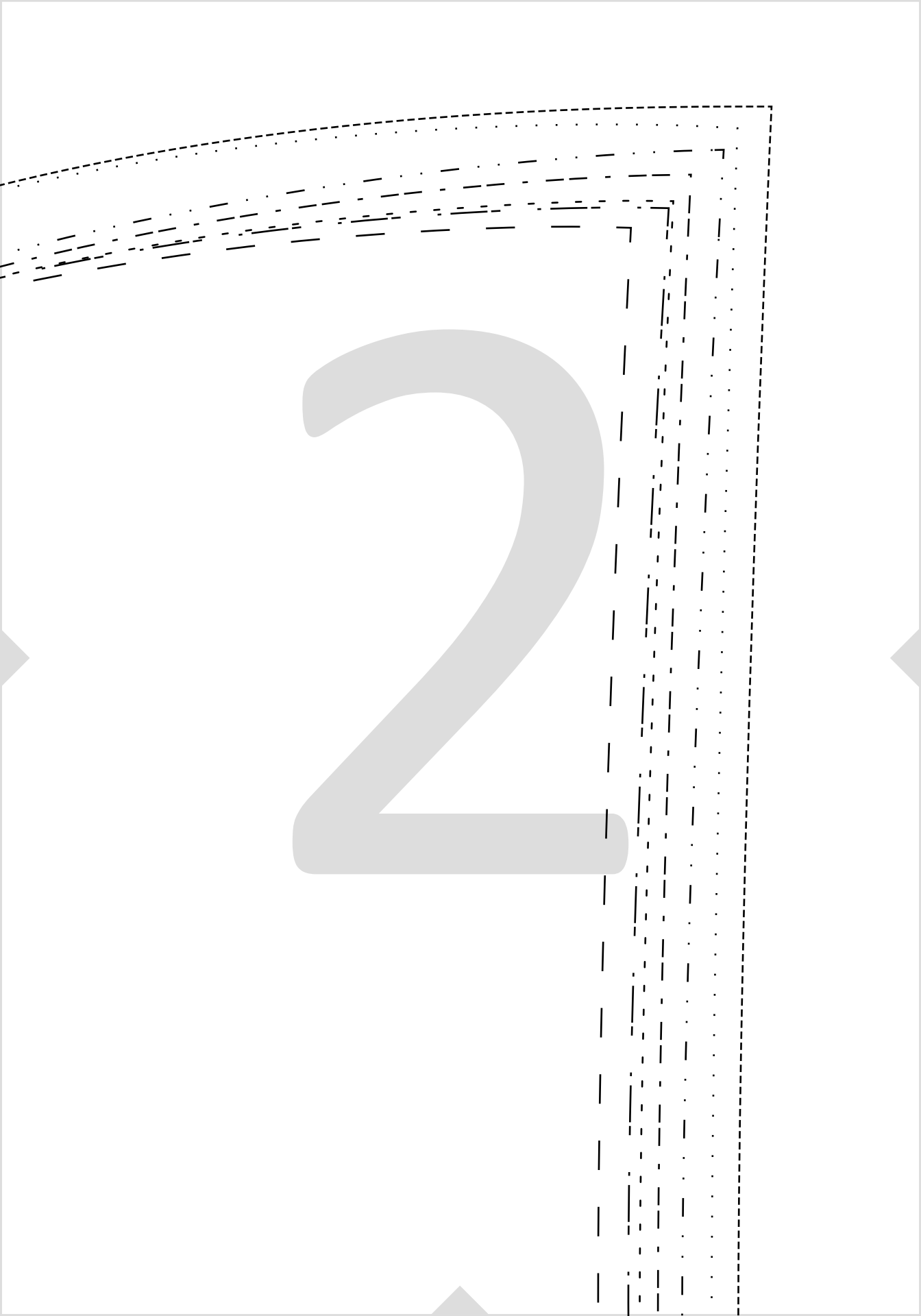
Terms of Use & Copyright

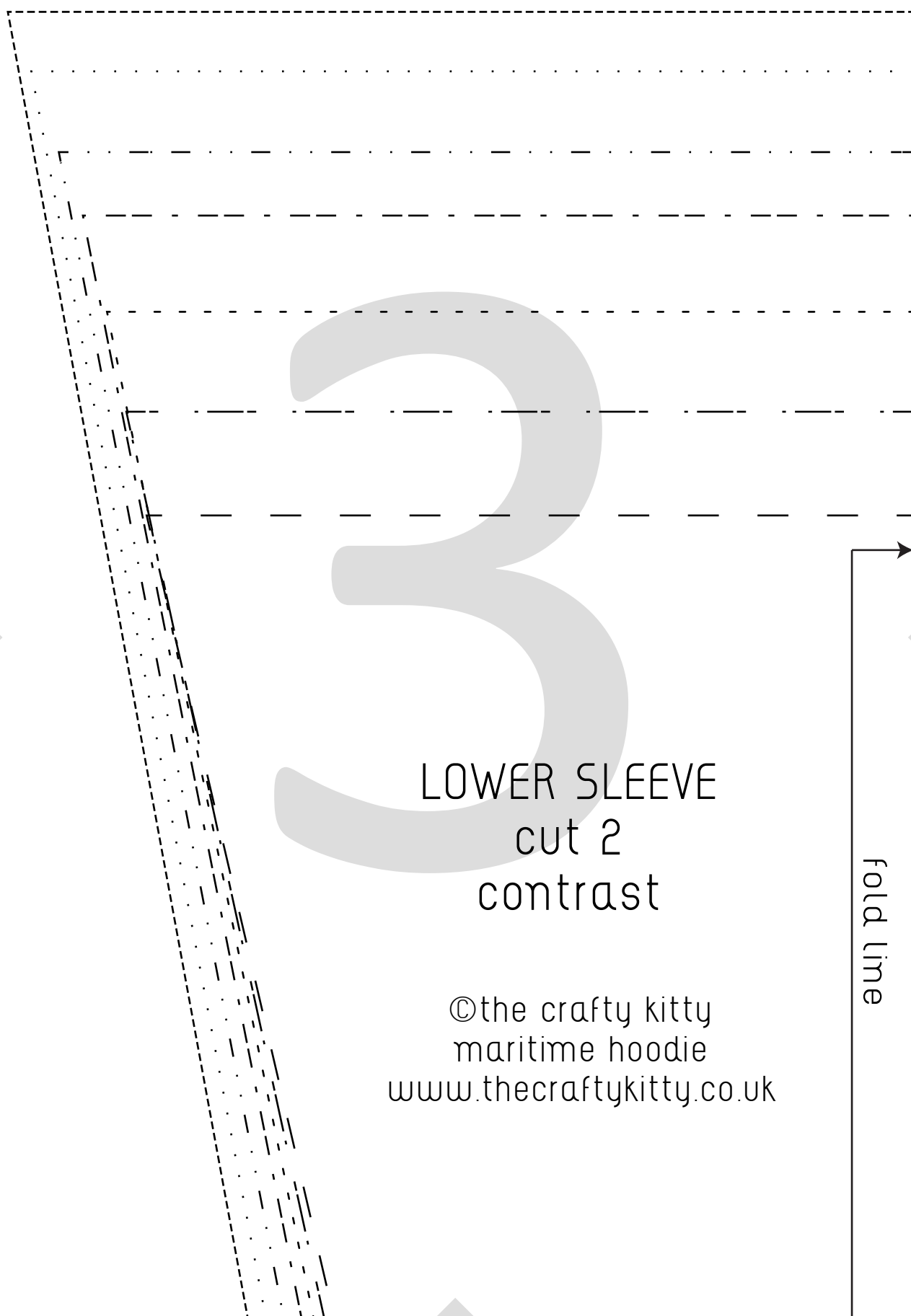
Small scale, home based crafters may sell handmade garments made using this pattern, provided full credit is given to 'The Crafty Kitty' in all product listings and hang tags (if used). This pattern should not be used for factory or mass production.

All patterns, pictures and instructions are protected by copyright law and should not be copied, reproduced or redistributed in any way. Please direct other persons to my website (www.thecraftykitty.co.uk) so they can obtain a copy for themselves. Thank you for supporting my business and respecting my copyright.



HOOD-cut 2
main, cut 2 contrast





LOWER SLEEVE
cut 2
contrast

©the crafty kitty
maritime hoodie
www.thecraftykitty.co.uk

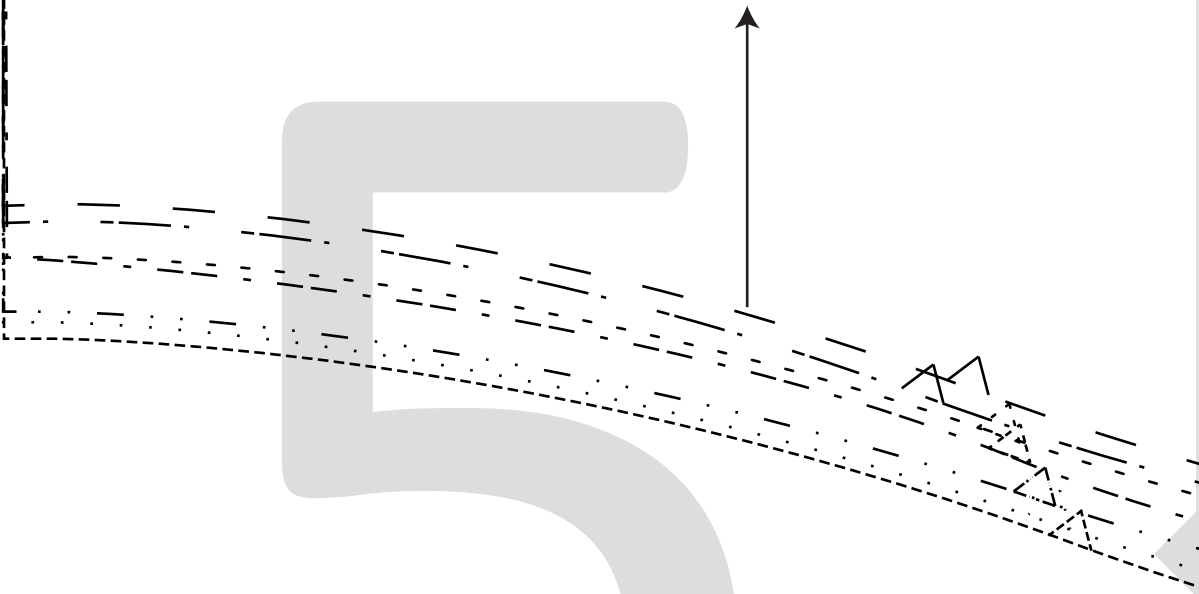
fold line

POCKET-cut 2 contrast

fold line

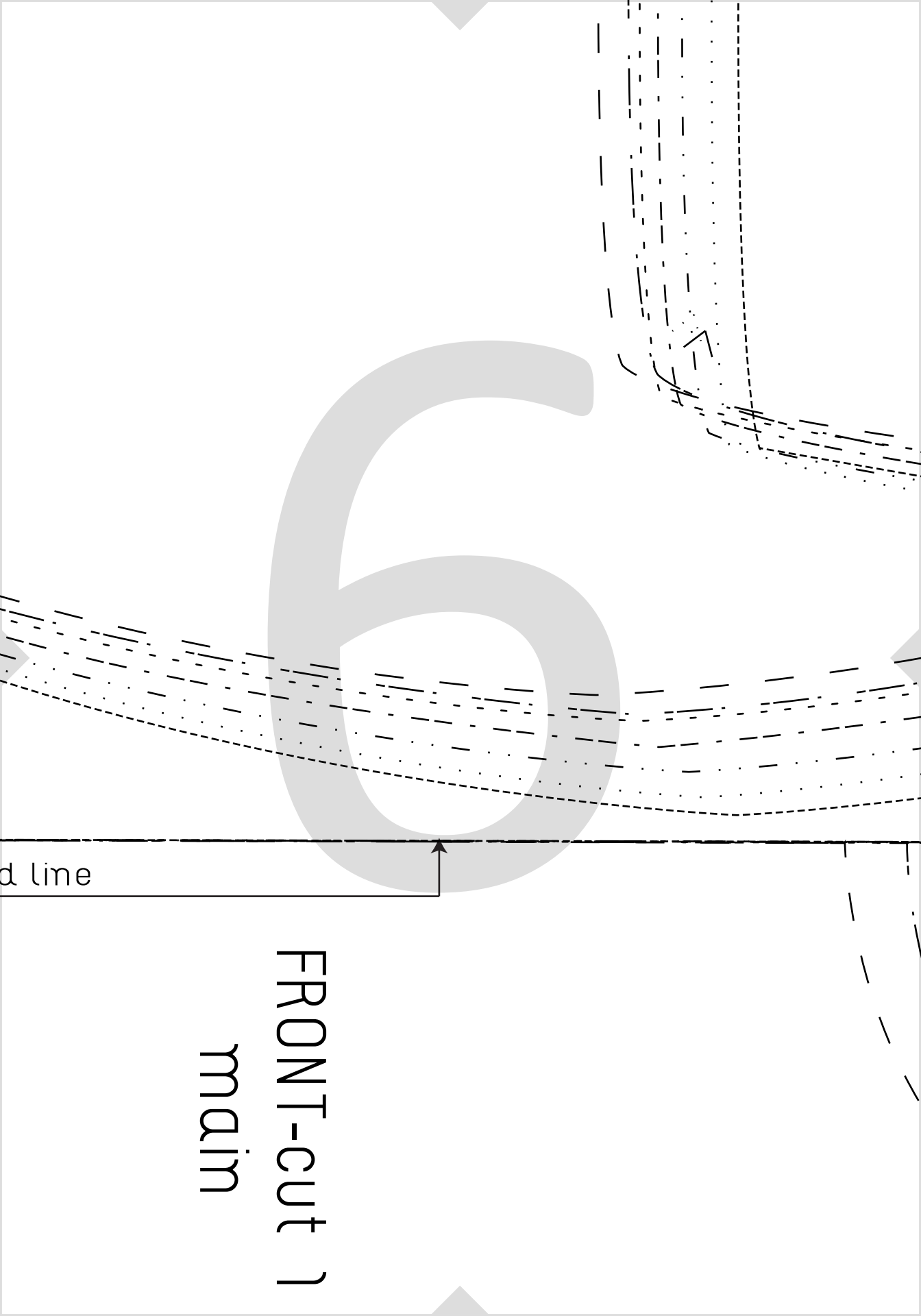
©the crafty kitty
maritime hoodie
www.thecraftykitty.co.uk

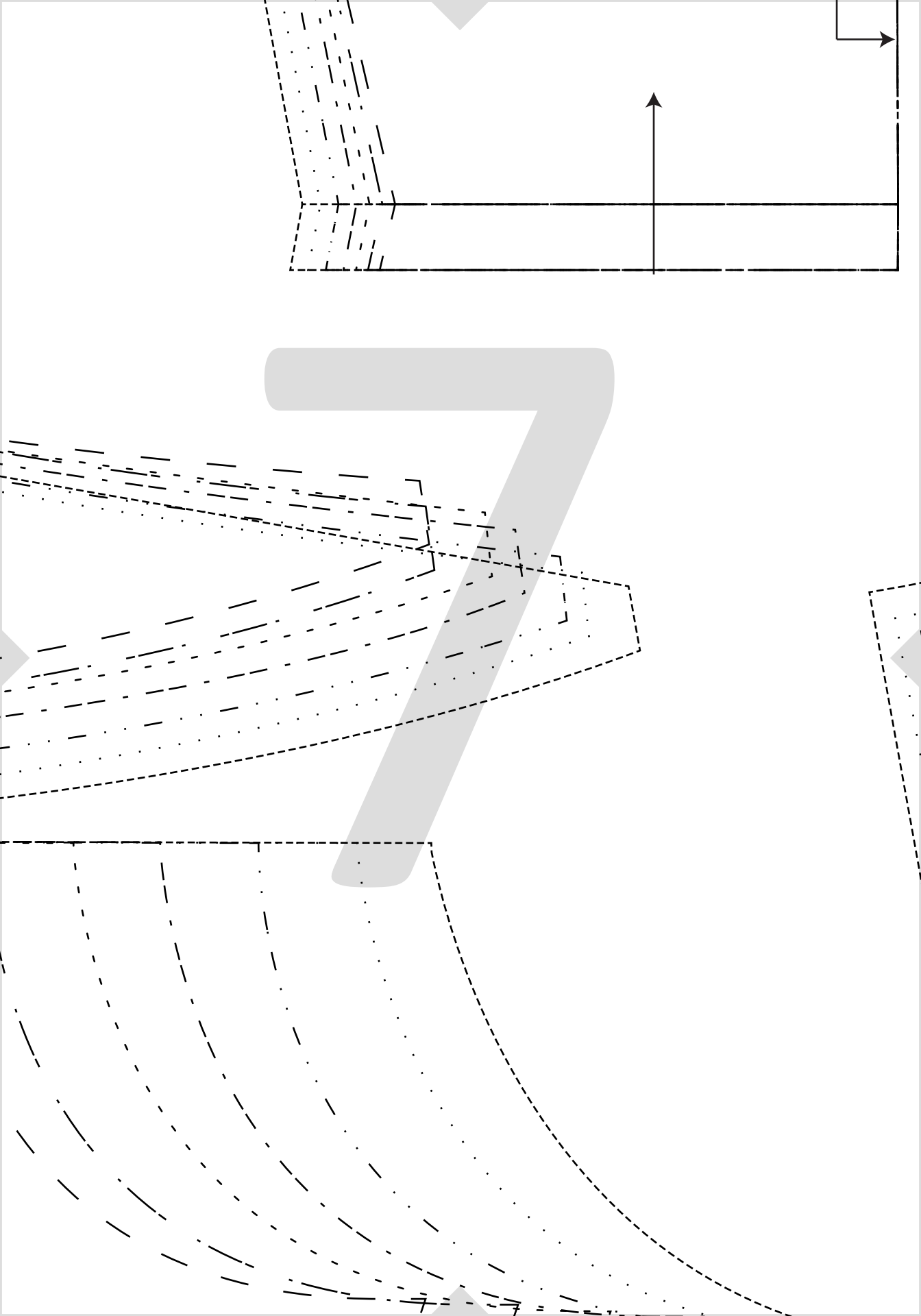
©the crafty kitty
maritime hoodie
www.thecraftykitty.co.uk

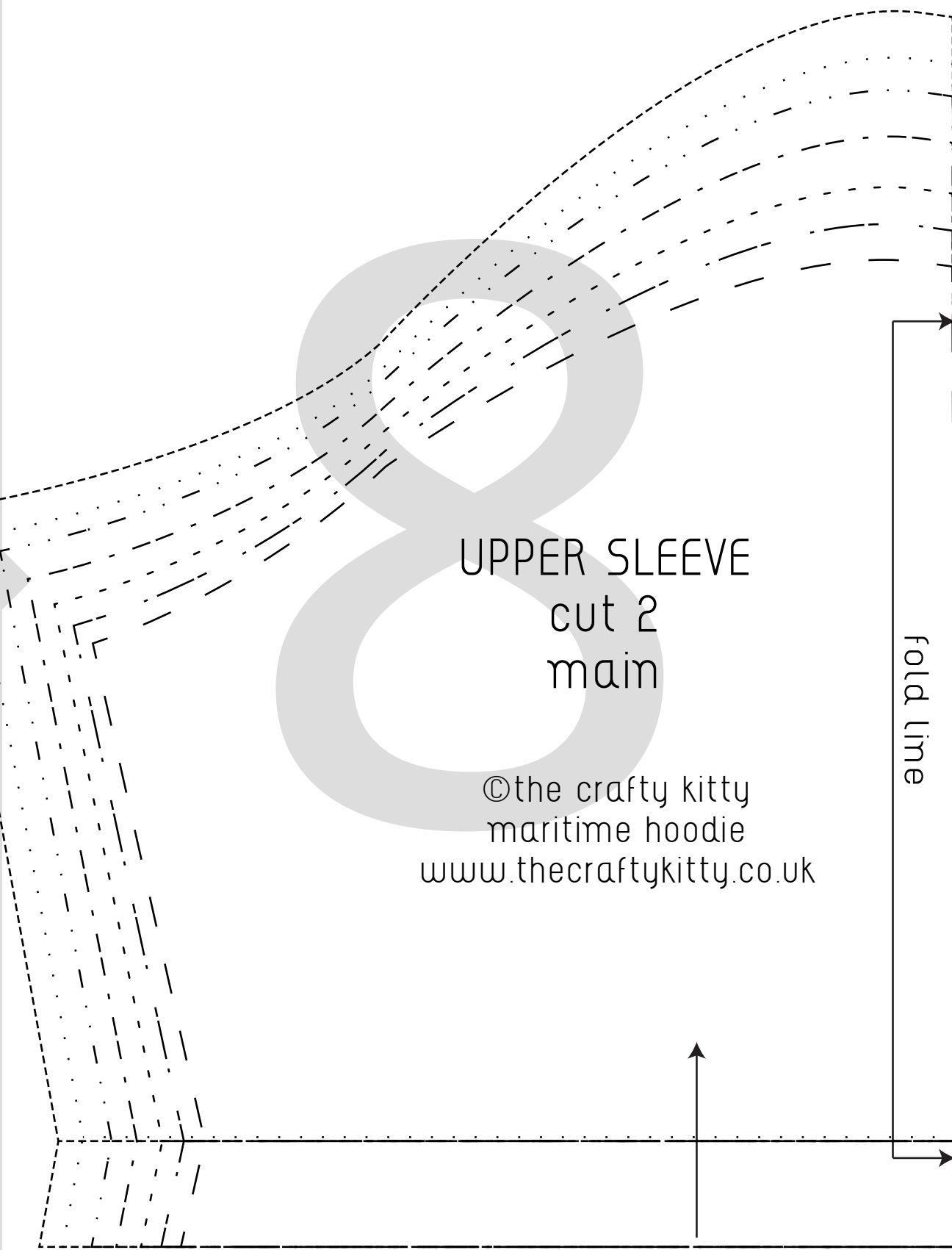


fol

©the crafty kitty
maritime hoodie
www.thecraftykitty.co.uk







UPPER SLEEVE
cut 2
main

©the crafty kitty
maritime hoodie
www.thecraftykitty.co.uk

2	3	8	9	5	6	4	3
---	---	---	---	---	---	---	---

pocket opening markings

2-3 years — — — — —

3-4 years — . — . — . —

4-5 years - - - - -

5-6 years - - - - -

6-7 years — . . ——— . . ——— . . ———

7-8 years

8-9 years -----

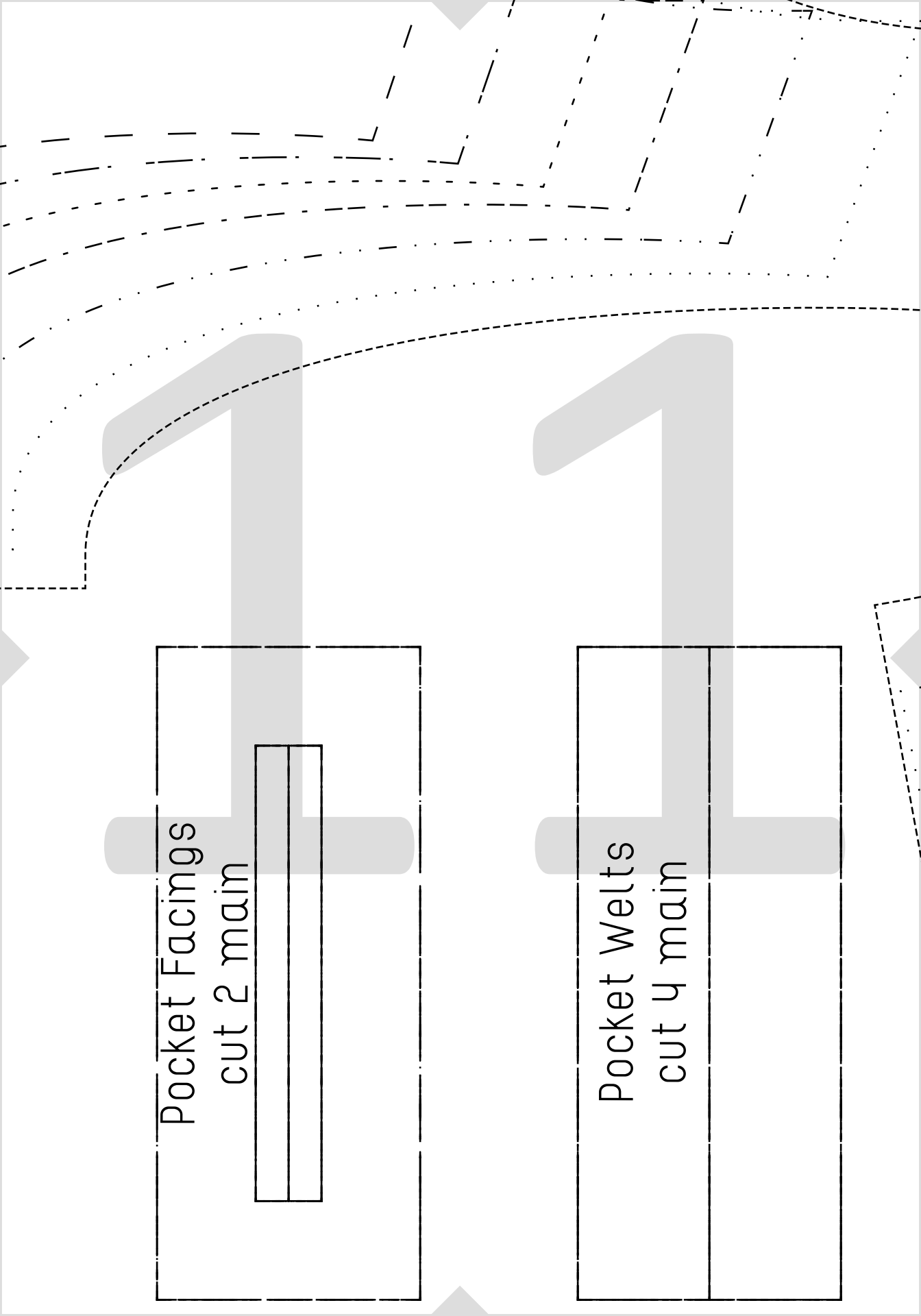
	h-3	u-4	o-5	l-6	7-8	8-9
--	-----	-----	-----	-----	-----	-----



Maritime Hoodie

THE CRAFTY KITTY





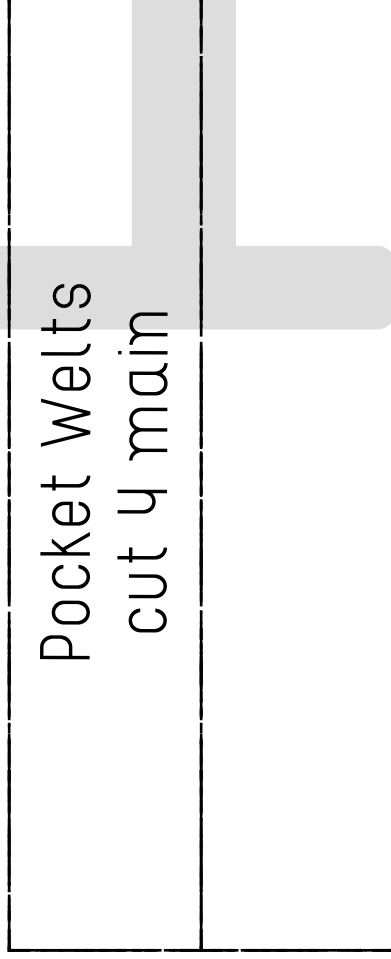
Pocket Facings

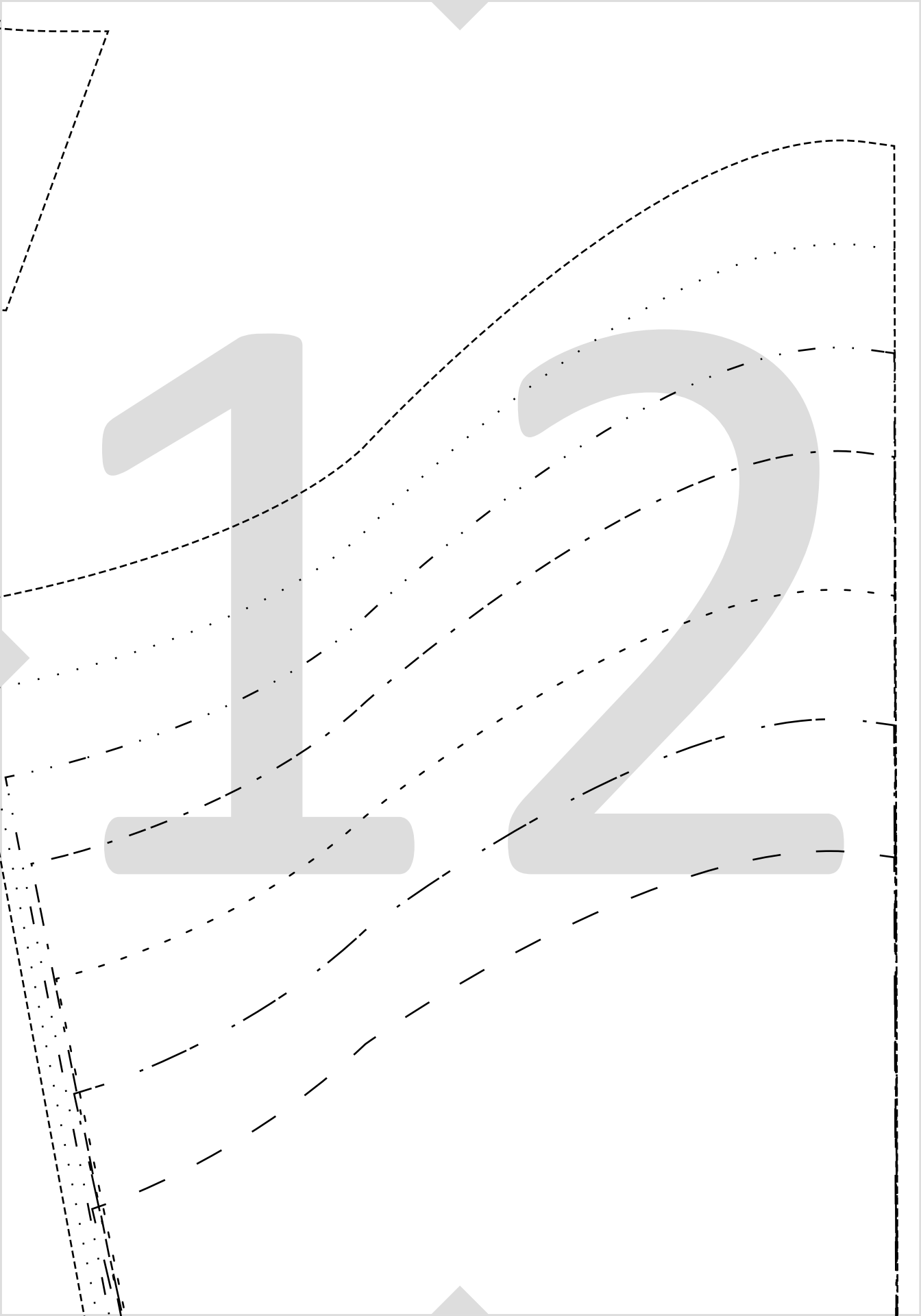
cut 2 main



Pocket Welts

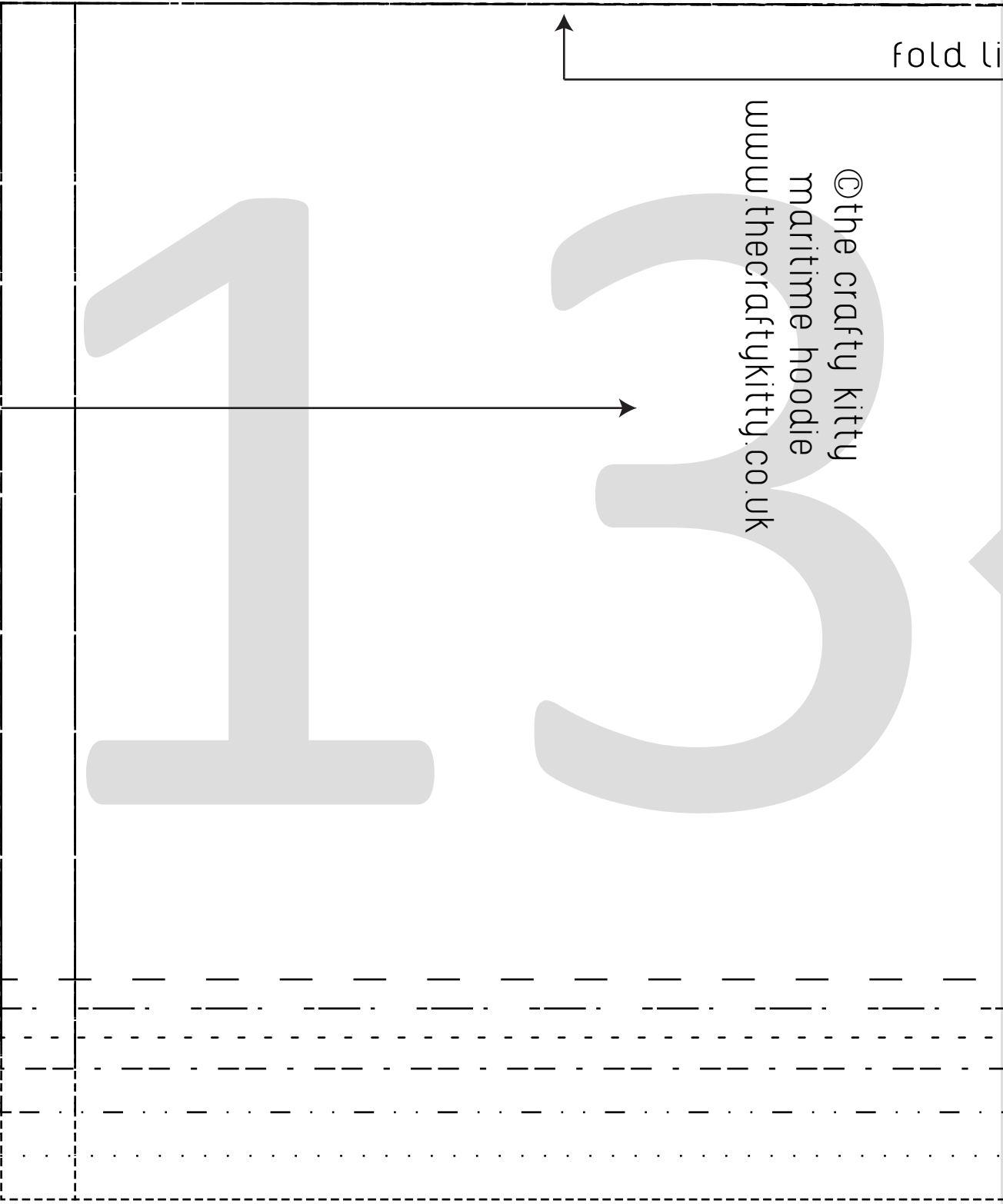
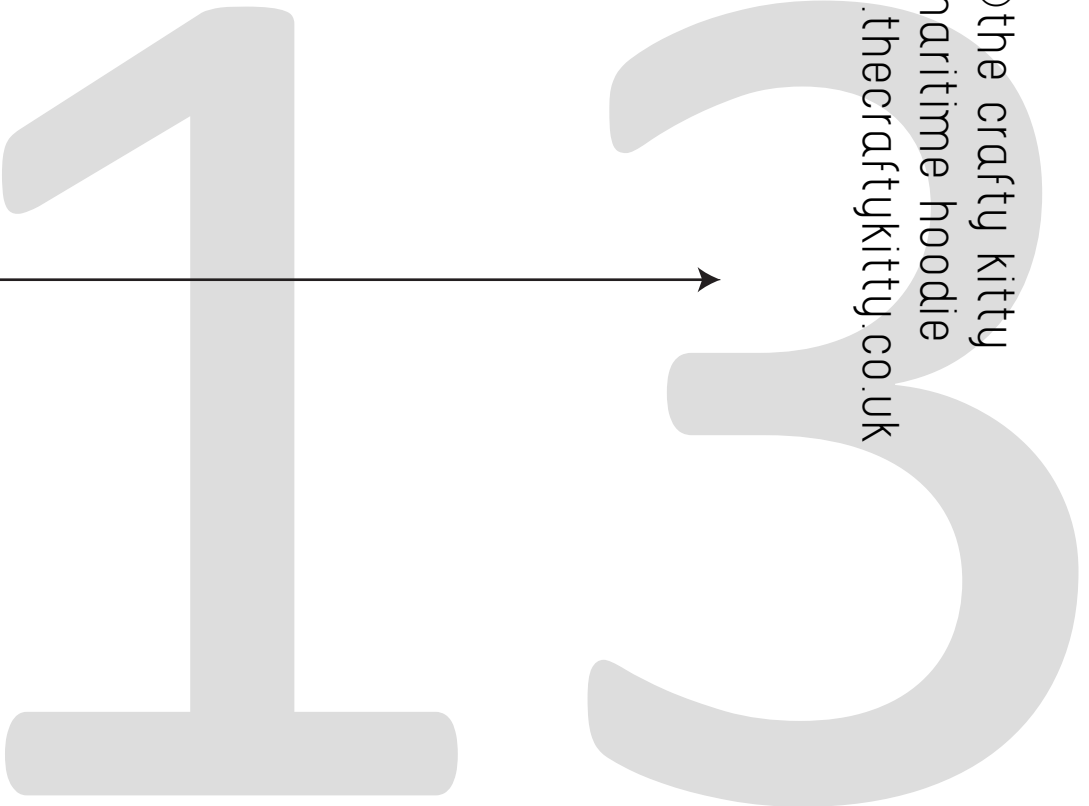
cut 4 main





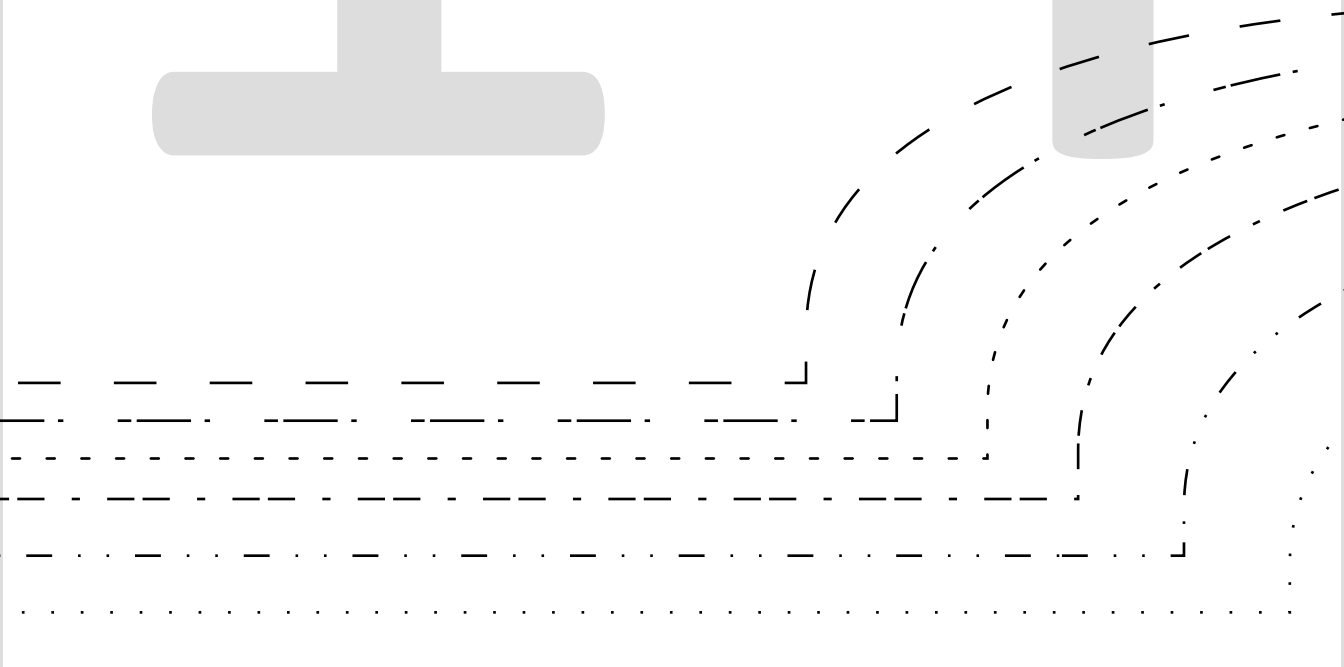
fold li

©the crafty kitty
maritime hoodie
www.thecraftykitty.co.uk



me

BACK-cut
main



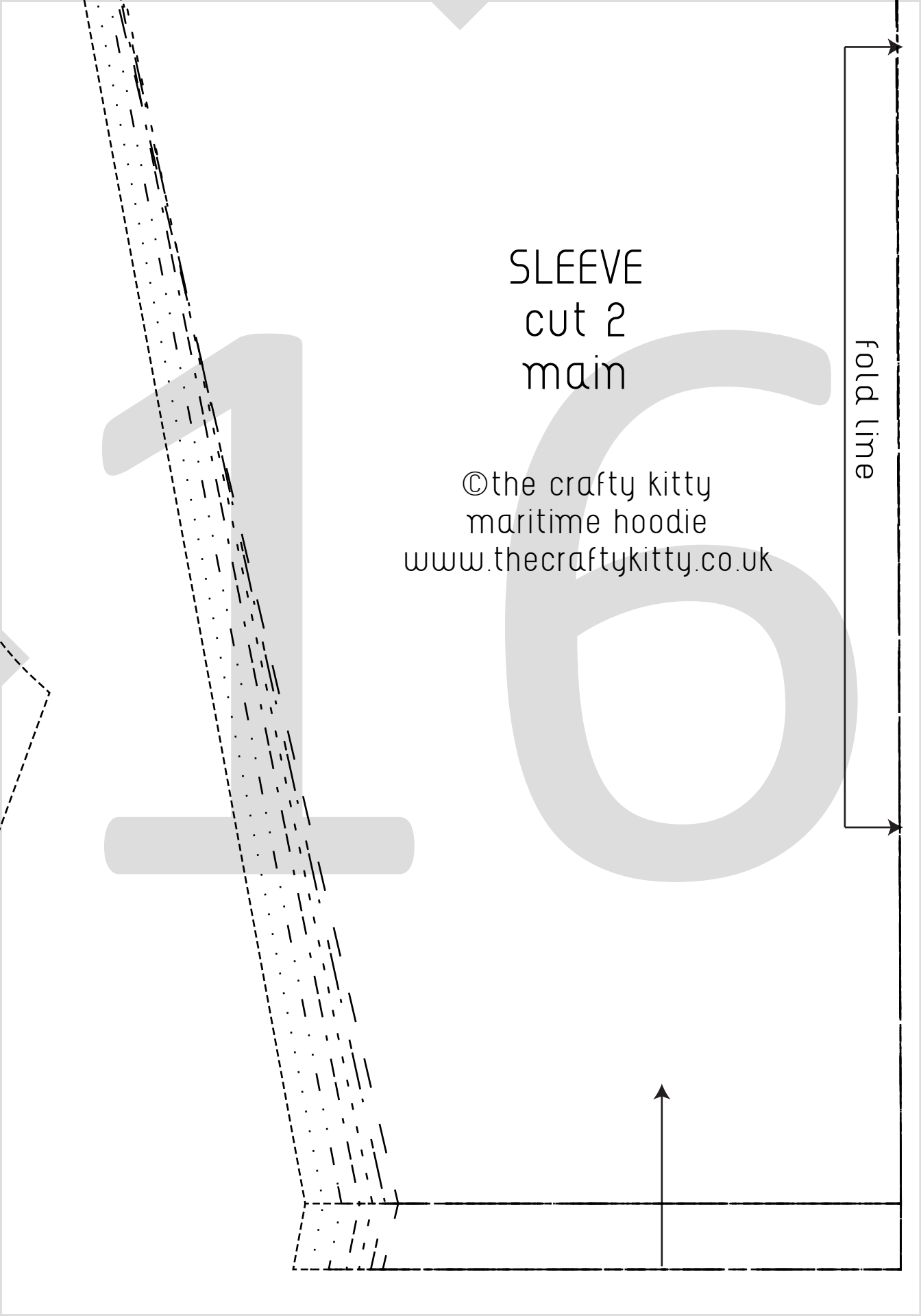
ed

15

SLEEVE
cut 2
main

©the crafty kitty
maritime hoodie
www.thecraftykitty.co.uk

fold line





ABOUT STEPHANIE

sewing+ craft | tutorials+ patterns

Stephanie writes sewing and craft tutorials for grown ups and for kids, online and in print. She likes to work with organic, sustainable, recycled and repurposed materials!

Find her online at www.thecraftykitty.co.uk.

**THE
CRAFTY KITT**

www.thecraftykitty.co.uk

Copyright 2016 The Crafty Kitty | For personal use only.

