

OCTOBERAMA LEAF QUILT BLOCK

Inspired by the iconic Octoberama print, you now too can make a mod leaf block to showcase your larger scale prints! Instructions are for the block construction only and are beginner friendly. Pattern assumes you have basic sewing knowledge. Quilt sample pictured is a throw size measuring 56" x 62".



OCTOBERAMA LEAF QUILT BLOCK

CUTTING (per one block - finished 8 x 12")

- 1 rectangle, 8.5" wide by 12.5" tall, main fabric
- 2 rectangles, 5" x 9", background fabric
- 1 curve corner piece, background fabric cut on the fold

PREPPING YOUR PIECES

Read through instructions and choose your final layout before trimming the leaf bottoms. If you choose to have some upsidedown leaves, you'll still want to make sure directional prints are right side up.

- Fold your MFR in half on the long side as illustrated below. Press the top and bottom creases with your iron. Carefully line up and trim off the corner using your clam shell template. Notch the top of the MFR 1/4" from the fold. Also notch the side of your MFR at the top of your clam shell so that you will be able to line up the top of your curved corner piece. When you unfold the bottom of the MFR it will be a semicircle. **FIG. 1**

FABRIC REQUIREMENTS

- 4 1/2 of one fabric, (9) 3/8 yards, or (18) fat quarters*.
- 4 yards background fabric (Solid Cream)

SUPPLIES

- Cutting mat & ruler
- Rotary blade
- Pins
- Coordinating thread
- Washable glue stick (optional!)

SEAM ALLOWANCE = 1/4"

MF = Main Fabric

MFR = Main Fabric Rectangle

BF = Background Fabric

BFR = Background Fabric Rectangle

* Fat quarters measure approximately 18 x 22".

FIG. 1

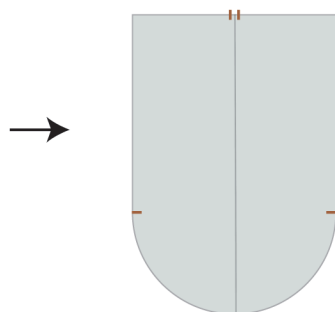
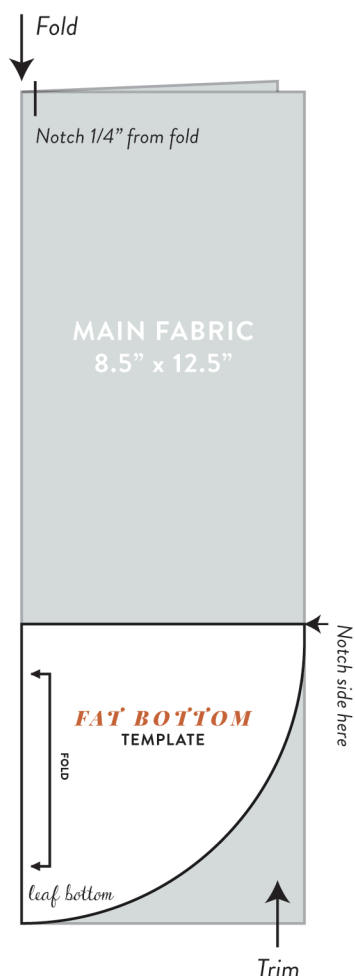
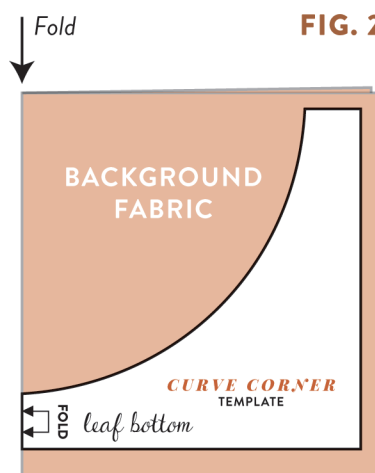


FIG. 2

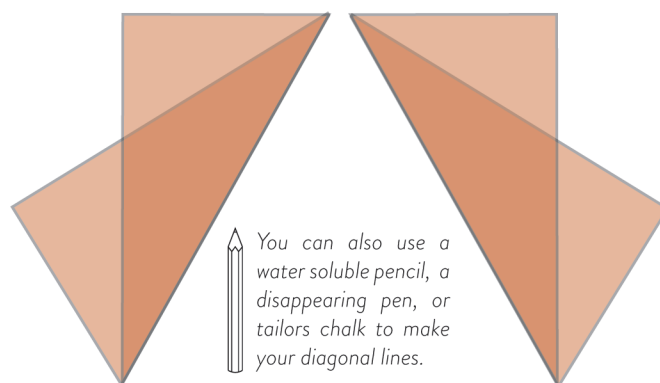


- Next, cut your Curve Corner on the folded piece of BF. **FIG. 2**

- Mark diagonal lines on the wrong side of your two BFR rectangles by pressing with your iron from corner to the diagonal corner. Make sure to have two mirrored pieces for each block. **FIG. 3**

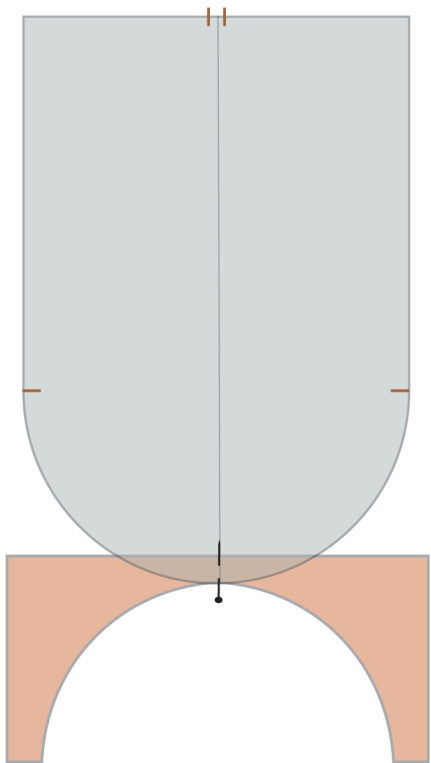


FIG. 3

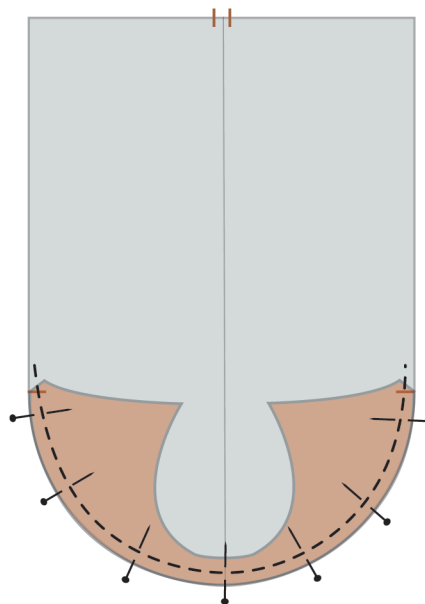


ATTACHING THE CURVED CORNER PIECES

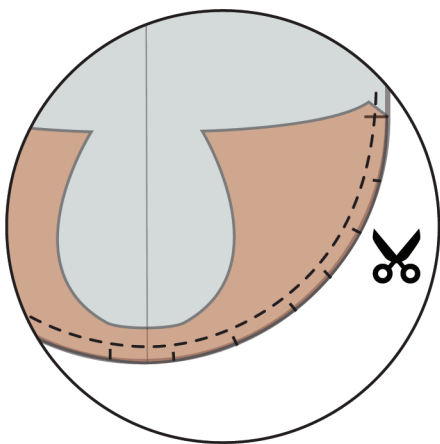
- 1 Pin or glue the leaf bottom piece to the MFR starting at the middle crease. Line up the top of the curve corner piece to the notches on each side of the MFR. If using a glue stick, make sure to keep the glue within the seam allowance.



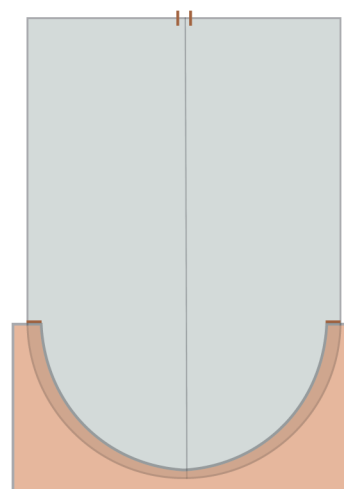
- 2 Sew along the curve, stopping to adjust as you need and to keep control. You will find that you will need to use both hands to guide the fabric so that you are not creating folds. Use a reduced stitch length for this step. If using pins instead of glueing, you may opt to clip your seam allowance *before* sewing. This will help ease the fabric into a nice, smooth curve.



- 3 Clip approximately 1/8" notches around your curve seam allowance. This will help the fabric to lay flat once ironed. Be very careful not to clip your seam.

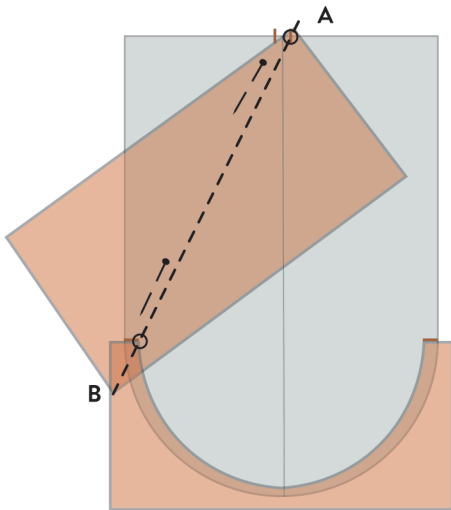


- 4 Open the curve corner piece and press with the seam allowance toward the bottom.



ATTACHING THE BACKGROUD RECTANGLES

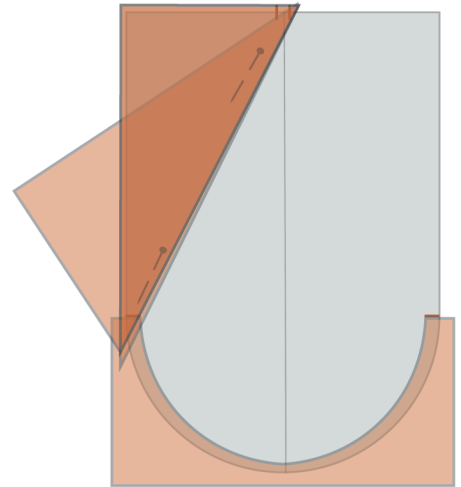
- 1 With right sides together, pin the BFR to the MFR using the right notch to match one corner of the pressed line. Be sure to let to point hang over a scant 1/8". The line should overlap the top of the curve piece, so when it is sewn, it incases the raw top edge of the curve. Notice the placement of the pins. This allows you the flip over the corner, to make sure that it completely overlaps the corner of the MFR. If it is too short, readjust your rectangle and re test. If this comes up short, so will your finished block.



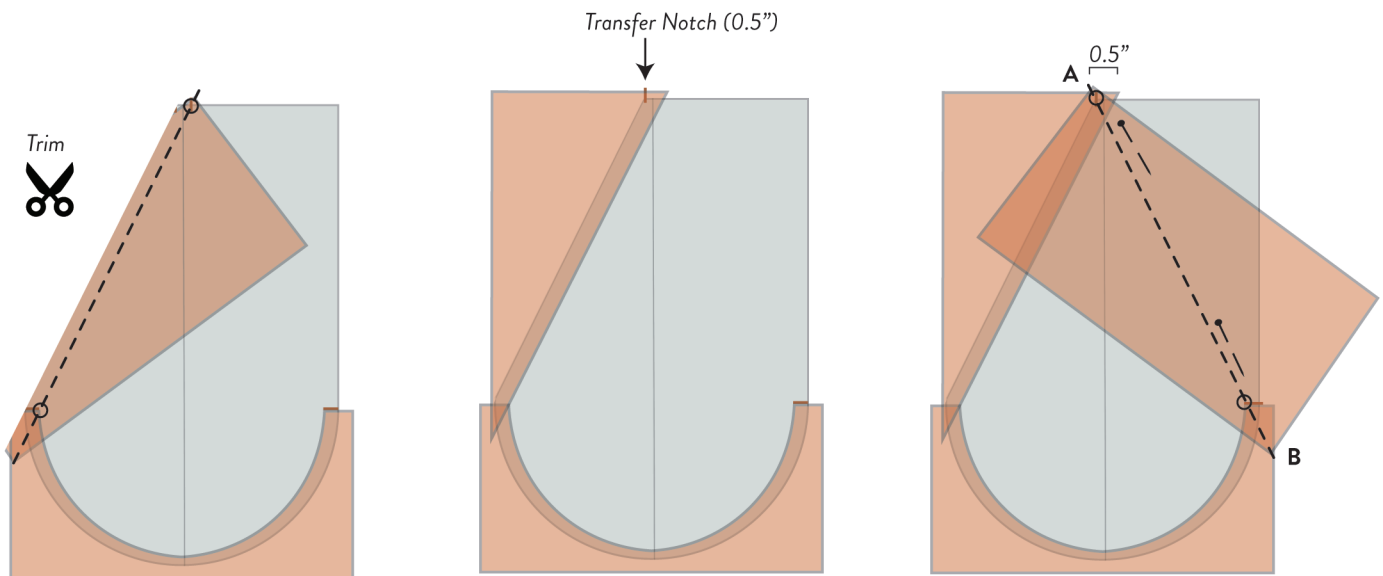
POINTS A & B: These are the two points that are most important to match when placing your BFRs.

Point A on the first BFR needs to be lined up at the right side notch. The point should overlap the top edge slightly. The Second BFR needs to line up 0.5" from the edge of the first BFR point. This point should also slightly hang over the top edge.

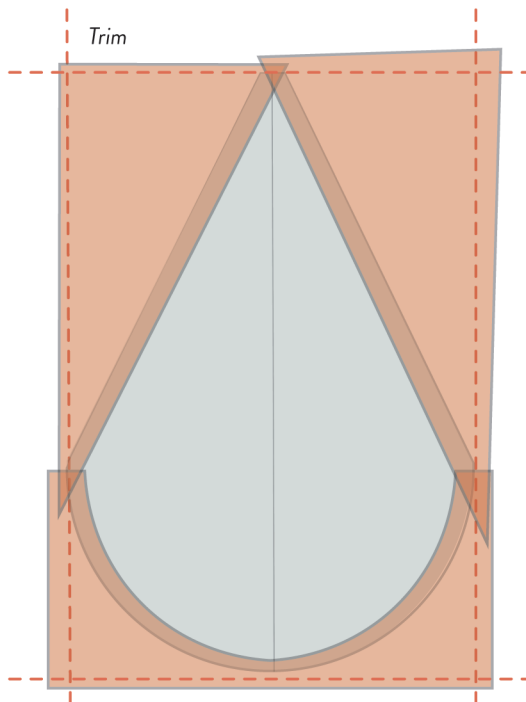
Point B will meet the inner point of the curve piece, encasing the top raw edge. The point may or may not hang over the side edge, however this is not important, so don't worry about it too much. You'll trim this all away anyhow.



- 2 Trim the excess at 1/4" seam allowance. Press open. Transfer your notch to the BF piece, and repeat the first step to sew on your second BFR.



TRIMMING



Begin by trimming the very bottom of the block. There should be $\frac{1}{2}$ " of curve corner bottom below the seam.

Next, trim the top so that the total height is back to 12.5". There should be at least $\frac{1}{4}$ " of background fabric above the point of the leaf. Before you trim, if there will be less than $\frac{1}{4}$ " of space above the point, take out the excess at the bottom curve.

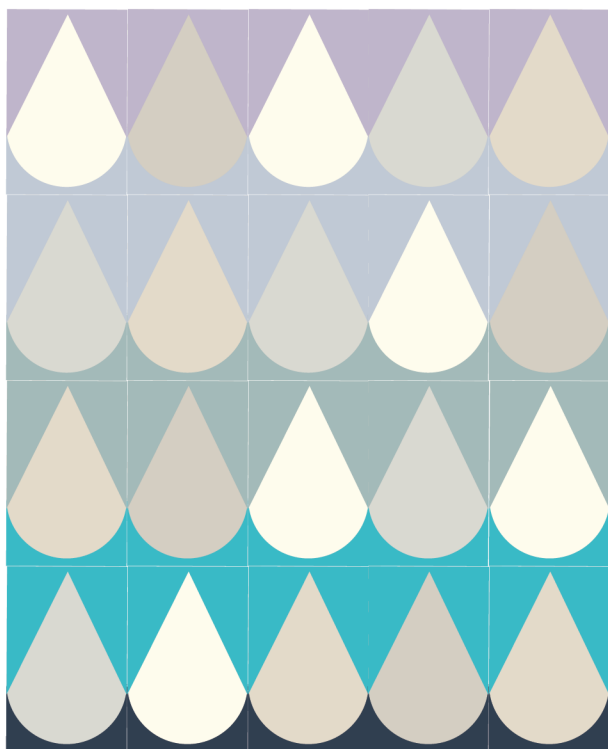
When trimming the sides back to 8.5", you must maintain at least $\frac{1}{4}$ " on either side point.

Remember when trimming - measure twice, cut once!

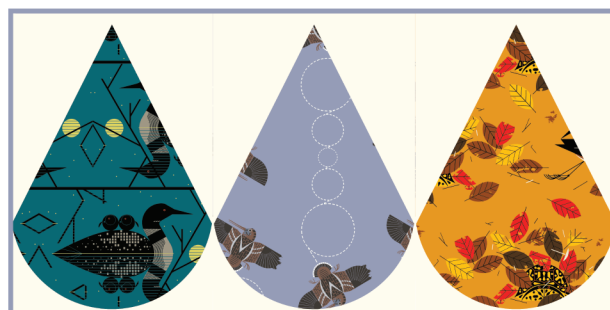


LAYOUTS

The Octoberama Leaf Block offers a variety of possibilities! Does it even need to be a leaf? You can interpret the design as a forest of trees, drops of water, or a sail boat! Here are just a few examples of ways you can use this block in your projects.



Right: This version is quite similar to the cover photo and sample quilt. It has the same number of blocks in each row and column, however the orientation of the blocks includes more downward facing leaves or trees, which more closely follows the Octoberama print. In between the 3rd and 4th rows, pieced a 3.5" strip to add some space between the two leaf (or tree!) sections.



Above: Try just a few blocks together to make a runner or a pillow.

Left: We used our low volume solids like Cream, Parchment (new!), and Oat (also new!) as the leaves to contrast against some moody blues and purples. This makes me think of a rainstorm.



OCTOBERAMA LEAVES TEMPLATES

Print this page at 100%, or full scale. Test the 1" square to make sure that your pieces are the correct size before you cut your fabric. It is also suggested to wash and dry your fabric before sewing to reduce any shrinking - however there are those of us that love that great crinkle that comes with a quilt when you don't wash your fabric first. We'll leave that creative decision up to you, darling!

