

# RURAL BACKYARD

Pattern by Brett Lewis & Jonathan Hamill

*Well known for his beautiful minimalist yet modern bird designs, Charley Harper's animal designs have become profoundly popular in the mid century modern decor in houses all around the world! That's why we wanted to highlight some of our favorite Charley Harper animal prints! We can only imagine he drew these looking right out his own window into his backyard as he was so often known to do.*



 birchfabrics

100% ORGANIC FABRIC, MADE WITH *love*, NOT PESTICIDES.

[www.birchfabrics.com](http://www.birchfabrics.com) | [info@birchfabrics.com](mailto:info@birchfabrics.com)





## THE DEETS

FINISHED SIZE - Queen (81.5 x 91.5")

SEAM ALLOWANCE - 1/4"

TECHNIQUE - Piecing

SKILL LEVEL - Beginner

WOF = Width of fabric, given the fabric is a minimum 44" wide.

Note: Do not cut off selvedge prior to cutting WOF strips. This will help maximize fabric usage.

Featuring fabric from

**CHARLEY  
HARPER<sup>®</sup>  
BACKYARD**



Hummingbird



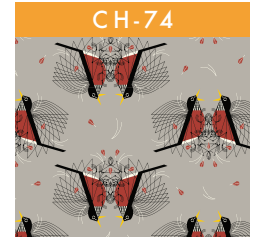
Lucky Ladybug



Limp on a Limb



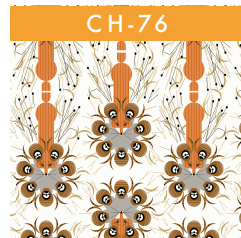
Crawling Tale



Round Robin



Backyard Dogs



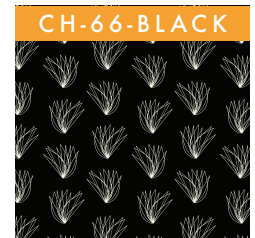
Quail Safe



Cat Nip



Moonbeam Turkeys



Wings in Black

## FABRICS LIST YARDAGE

## CUT LIST

Hummingbirds	1/2 yd	(2) 8.5" x WOF Strips
Lucky Ladybug	1/2 yd	(2) 8.5" x WOF Strips
Limp on a Limb	1/2 yd	(2) 8.5" x WOF Strips
Crawling Tale	1/2 yd	(2) 8.5" x WOF Strips
Round Robin	1/2 yd	(2) 8.5" x WOF Strips
Backyard Dogs	1/2 yd	(2) 8.5" x WOF Strips
Quail Safe	1/4 yd	(1) 8.5" x WOF Strips
Cat Nip	1/2 yd	(2) 8.5" x WOF Strips
Moonbeam Turkeys	1/4 yd	(1) 8.5" x WOF Strips
Wings in Black	3.5 yds*	(22) 3.5" x WOF Strip, (1) 8.5" x WOF strip, cross cut into (12) 8.5" x 3.5" pieces.

\* Also includes 3/4 yard of fabric for Binding. Binding is cut at 2.5" x WOF strips on the grain.  
We used 2.5 yards of 108-CH-69 which is 108" wide back from Charley Harper Bird Architects collection.

100% ORGANIC FABRIC, MADE WITH love, NOT PESTICIDES.

INSTAGRAM: @birchfabrics #birchfabrics #ruralbackyardquilt



## FOCAL PRINTS - PREPPING FOR ROWS

1. Hummingbirds - Trim selvedge and sew together your two 8.5" strips to form 1 long strip. Press seam. Cross cut into (1) 51.5" x 8.5" piece, and (1) 29.5" x 8.5" piece.
2. Lucky Ladybug - Trim selvedge and sew together your two 8.5" strips form 1 long strip. Press seam. Cross cut into (1) 31.5" x 8.5" piece, and (1) 44.5" x 8.5" piece.
3. Limp on a Limb - Cross cut WOF strips into the following pieces: (1) 24.5" x 8.5", (1) 16.5" x 8.5", and (1) 36.5" x 8.5".
4. Crawling Tale - Cross cut WOF strips into the following pieces: (1) 21.5" x 8.5", and (1) 24.5" x 8.5".
5. Round Robin - Cross cut WOF strips into the following pieces: (1) 42.5" x 8.5", and (1) 26.5" x 8.5".
6. Backyard Dogs - Trim selvedge and sew together your two 8.5" strips to form 1 long strip. Press seam. Cross cut into (1) 29.5" x 8.5" piece, and (1) 46.5" x 8.5" piece.
7. Quail Safe - Cross cut WOF strip into the following pieces: (1) 26.5" x 8.5", and (1) 9.5" x 8.5".
8. Cat Nip - Cross cut WOF strips into the following pieces: (1) 19.5" x 8.5", (1) 14.5" x 8.5", and (1) 36.5" x 8.5".
9. Moonbeam Turkeys - Cross cut WOF strip into the following pieces: (1) 30.5" x 8.5", and (1) 11.5" x 8.5".
10. Wings in Black - Prepare your horizontal sashing pieces (14) 3.5" x WOF of Wings in Black by sewing sets of two together, using a diagonal seam (FIG.1) to make (7) 88" x 3.5" strips, then trim down each strip to make (7) 75.5" x 3.5" strips.

## PIECING ROWS

1. Sew together blocks in each row as per the diagram on the next page, (FIG.2) adding vertical sashing (3.5" x 8.5" Wings in Black) pieces between each focal fabric block. You will have a total of (8) rows measuring 8.5" x 75.5". Press all seam allowances toward the darker fabric, or as desired.
2. Add horizontal sashing pieces (3.5" x 75.5" Wings in Black strips) to the bottoms of rows 1 - 7.
3. Sew rows together.

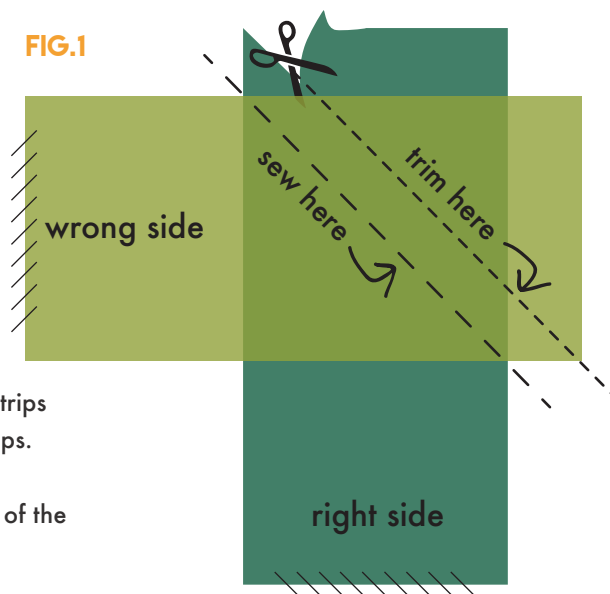
## BORDERS

1. You should have (8) 3.5" x WOF strips of Wings in Black left. Piece the strips together in sets of two using a diagonal seam to make (4) 3.5" x 88" strips.
2. Trim down (2) strips to 3.5" x 85.5" and sew these to the vertical sides of the quilt top. Press seams toward long vertical border piece.
3. Trim down the remaining (2) strips to 3.5" x 81.5". Sew these to the top and bottom the quilt top. Press seams towards the border.

### SEWING TIP - MAKE A DIAGONAL SEAM!

To sew long strips of sashing or binding together, try a diagonal seam! This will give your quilt a cleaner and tidier finish. Follow the diagram below, and don't forget to trim and press your seam allowance!

FIG.1

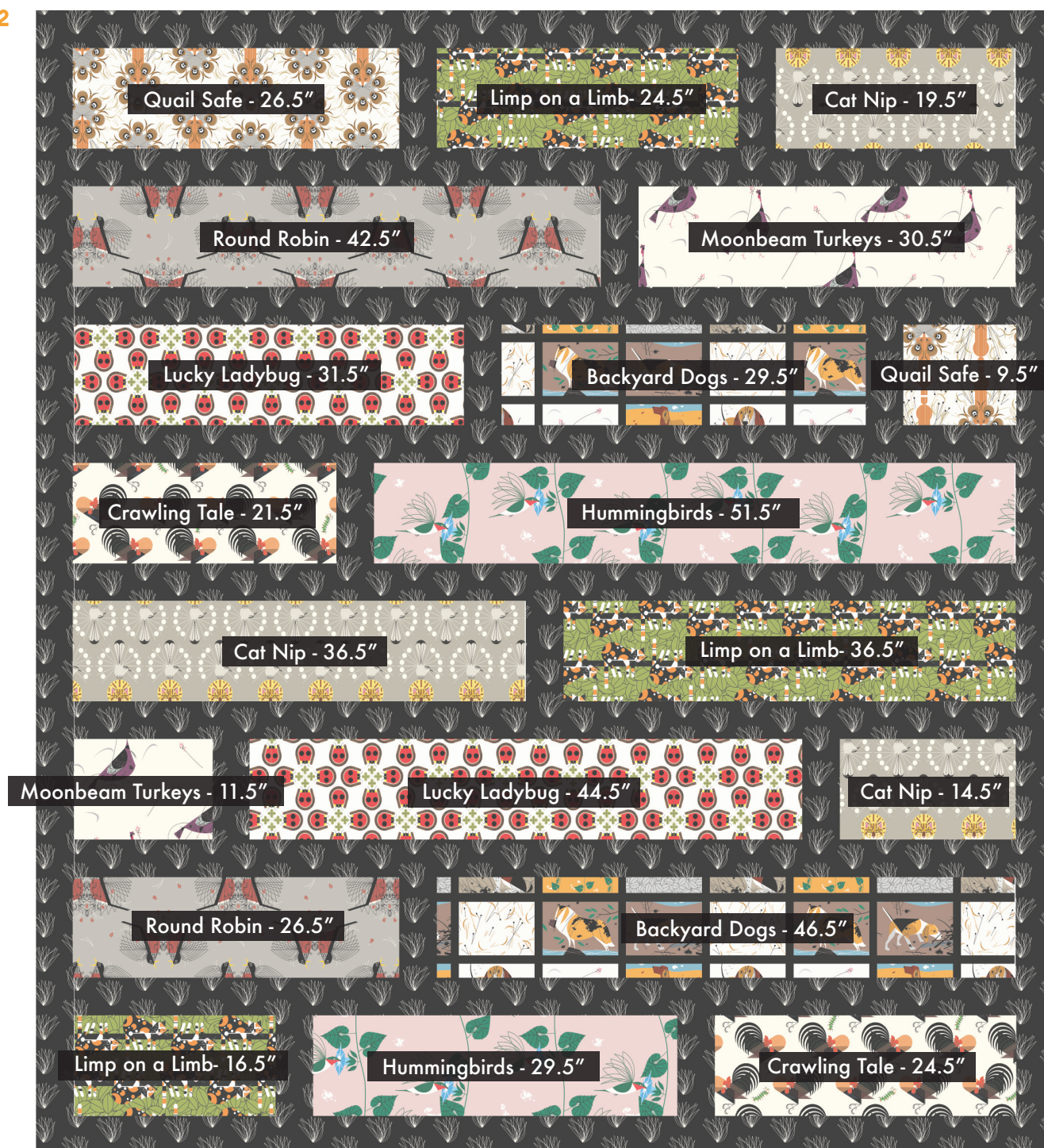


100% ORGANIC FABRIC, MADE WITH love, NOT PESTICIDES.

INSTAGRAM: @birchfabrics #birchfabrics #ruralbackyardquilt



**FIG.2**



## FINISHING

*voila!*

Once your quilt top is done, you will need to choose a backing. We used 2.5 yards of 108" Large Architects wide width poplin to back this quilt. For the binding, we used the same Wings in Black we used for the sashing. Enough yardage for the binding is included in the fabric requirements chart.

We want to see what you make! Tag @birchfabrics on Instagram and use #ruralbackyardquilt

100% ORGANIC FABRIC, MADE WITH *love*, NOT PESTICIDES.

INSTAGRAM: @birchfabrics #birchfabrics #ruralbackyardquilt