

# WAFFLE CONE

A QUILT PATTERN BY

Suzy  quilts in partnership with  birchQUILTS

Active hyperlinks, so click where you see an underline!



**100% ORGANIC FABRIC MADE WITH LOVE, NOT PESTICIDES.**

[birchfabrics.com](http://birchfabrics.com) + [info@birchfabrics.com](mailto:info@birchfabrics.com)

Finished size: 51" x 63" | Fabric: [Merryweather](#)  [@SuzyQuilts](#) [@BirchFabrics](#) [#WaffleConeQuilt](#) [#BirchFabrics](#)

Floral Multi



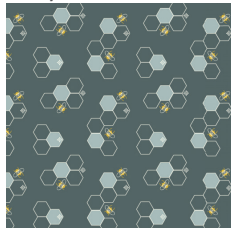
Floral Marigold



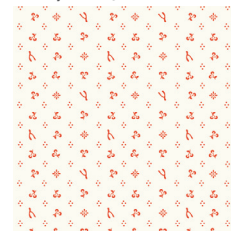
Birds & Bees



Merry Hive



Merrythought



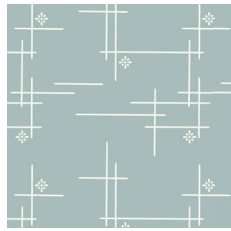
Merrythought Red



Hatch Dusk



Hatch Marigold



Hatch Mineral



Nevermore



Merry Border

**FQ** = Fat Quarter: pre-cut fabric measuring approximately 18" x 21" | **WOF** = Width of Fabric: cotton broadcloth commonly used for quilting is 42" | **Seam Allowance** = 1/4"

FABRIC		CUTTING
Hatch Dusk	1/8 yd.	1 - 2 1/2" x WOF
Merry Hive	1/8 yd.	1 - 2 1/2" x WOF
Solid Mineral	1/4 yd.	2 - 2 1/2" x WOF
Floral Marigold	1/4 yd.	2 - 2 1/2" x WOF
Nevermore	1/4 yd.	2 - 2 1/2" x WOF
Merrythought Red	1/4 yd.	2 - 2 1/2" x WOF
Solid Cream	1/4 yd.	2 - 2 1/2" x WOF
Hatch Mineral	1/2 yd.	6 - 2 1/2" x WOF
Merry Border	3/4 yd.	4 - 2 1/2" x 26 1/2" - cut lengthwise* 1 - 12 1/2" square

FABRIC		CUTTING
Merrythought	1 FQ	1 - 12 1/2" square
Birds & Bees	1 FQ	1 - 12 1/2" square
Floral Multi	1/2 yd.	2 - 12 1/2" square
Solid Blush	1/2 yd.	2 - 12 1/4" square, 1 - 12 1/2" square
Solid Ruby	1/2 yd.	2 - 12 1/4" square, 1 - 12 1/2" square
Solid Slate	1/2 yd.	2 - 12 1/2" square, 1 - 9 1/4" square
Binding	1/2 yd.	6 - 2 1/4" x WOF
Backing	3 1/2 yd.	

### BLOCK INSTRUCTIONS

1. Cut all 12 1/2" squares in half on the diagonal. **NOTE:** Be careful not to cut the 12 1/4" squares. **Fig. 1**
2. Cut the 9 1/4" square in quarters on the diagonal. **Fig. 2**
3. Excluding Merry Border and Hatch Mineral, sew the 2 1/2" x WOF strips together in the order as seen in the cover photo. The 2 strip sets will be:
  - Strip Set 1: Floral Marigold, Nevermore, Solid Cream, Hatch Dusk, Merrythought Red, Solid Mineral
  - Strip Set 2: Floral Marigold, Nevermore, Solid Cream, Merry Hive, Merrythought Red, Solid Mineral

\*Cutting widthwise means cutting from selvage to selvage. However, cutting lengthwise will allow you to cut along the pattern of the border fabric.

Fig. 1

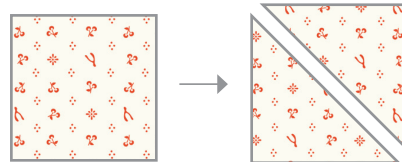


Fig. 2

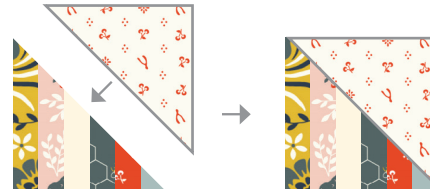


- Once both strip sets are sewn, trim each set to  $12 \frac{1}{2}$ " squares. Each set will yield 3 squares, for a total of 6 squares. **Fig. 3**
- Cut those squares in half on the diagonal as done in **Fig. 1**, for a total of 12 triangles. For this quilt top, only 9 pieced triangles are needed.
- Pair up the large triangles, 1 pieced and 1 not, according to the cover photo. Place right sides together, pin, and sew. Trim the unfinished block to  $12 \frac{1}{4}$ " **Fig. 4**

**Fig. 3**



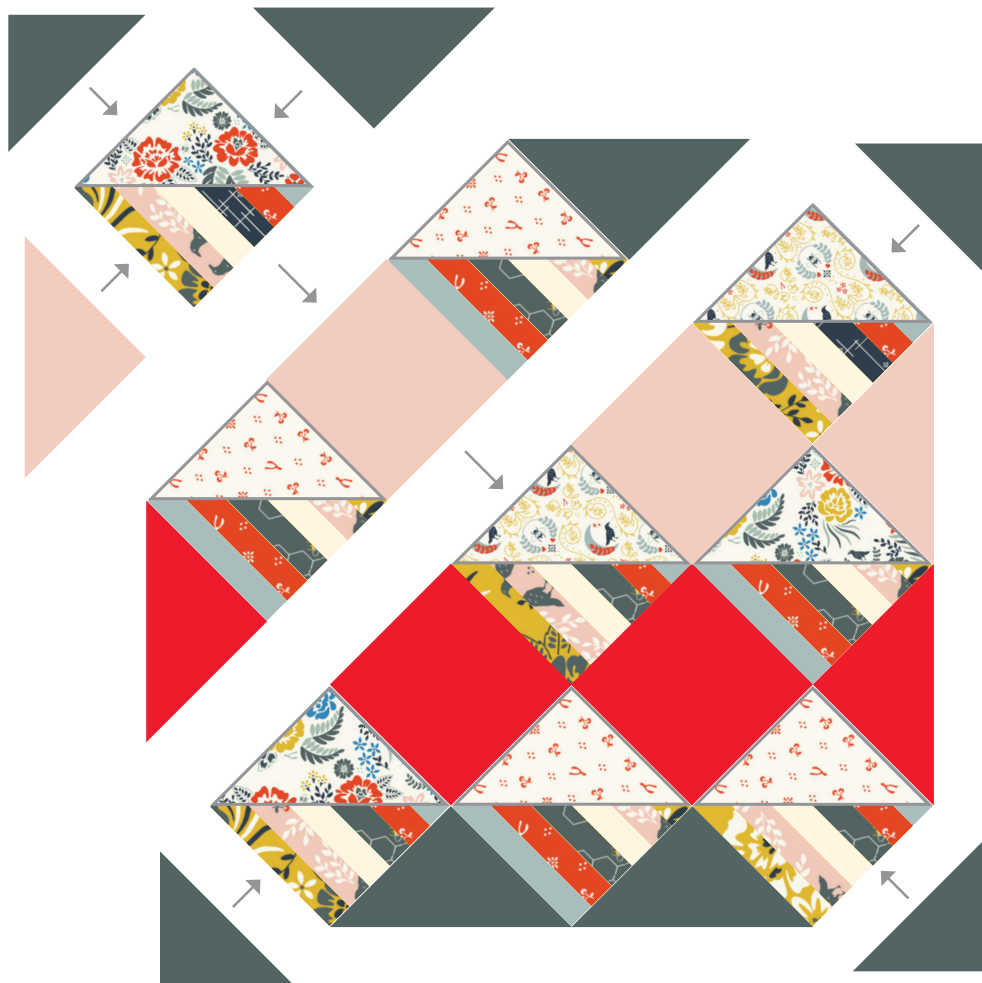
**Fig. 4**



## QUILT ASSEMBLY

- Lay out the quilt blocks, solid squares, and side setting triangles as seen in **Fig. 5**
- Place right sides together, pin, and sew into rows.
- Sew those rows together and finish by sewing the corner setting triangles to the corners of the quilt top. Trim the quilt top by squaring off the corners.

**Fig. 5**



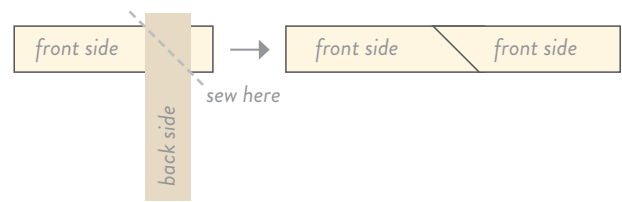
4. Using a 45° angle, sew the Merry Border 2 ½" x 26 ½" strips together and the Hatch Mineral 2 ½" x WOF strips together.

**Fig. 6**

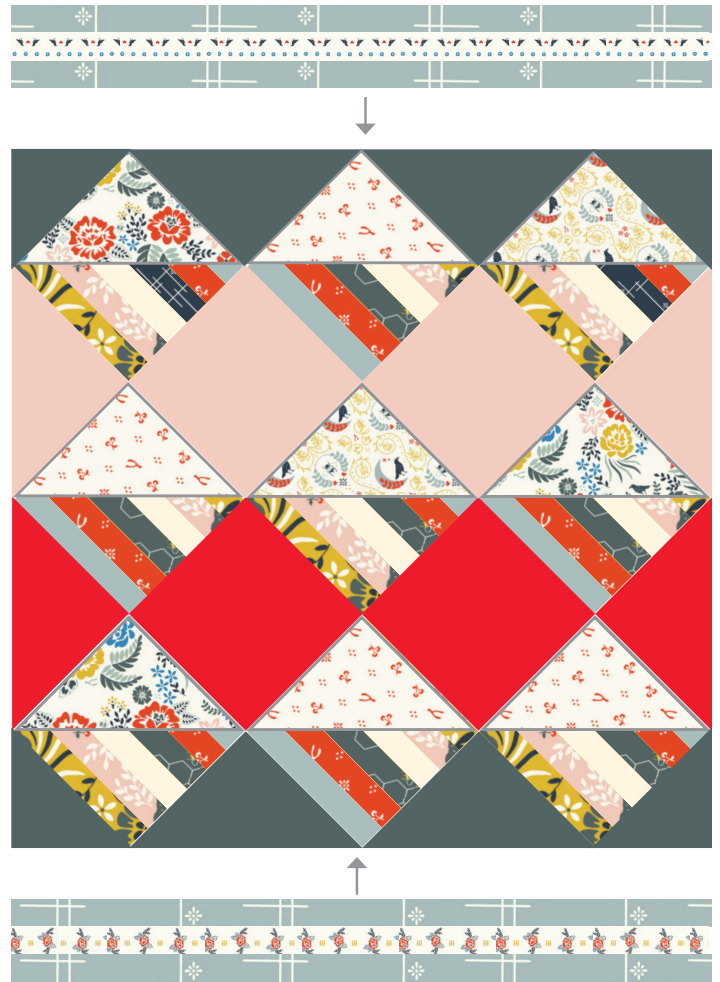
5. Trim the long Hatch Mineral strip to 2 ½" x 51 ½" and sew them to either side of the Merry Border strips. See **Fig. 7**

6. Sew the two border strip units to the top and bottom of the quilt top. See **Fig. 7**

**Fig. 6**



**Fig. 7**



## FINISHING THE QUILT

1. Layer the backing wrong side up, followed by the batting and quilt top right side up. Baste as desired. Quilt as desired.
2. Trim the excess batting and backing and square up the quilt.
3. Join the binding strips together with diagonal seams. Trim and press seams open.
4. Once all of the strips are sewn together, fold the binding in half lengthwise, wrong sides together, and press flat. Sew the binding to your quilt by lining up the raw edges.
5. After the binding is sewn onto one side of the quilt, fold it over to the other side and either machine stitch or whipstitch the binding to attach it and finish off the edges of the quilt.
6. Post your finished quilt to Instagram and use #WaffleConeQuilt.

**YouTube** Check out the Suzy Quilts YouTube channel for more tutorial videos! [bit.ly/suzyquilts](https://bit.ly/suzyquilts)

**IN-DEPTH TUTORIAL!** This step-by-step tutorial and video will explain how to machine quilt. Click [bit.ly/machine-quilt](https://bit.ly/machine-quilt)

**IN-DEPTH BINDING TUTORIAL!** This easy-to-follow tutorial and video will show every step in sewing binding on a quilt. Click [bit.ly/quilt-binding](https://bit.ly/quilt-binding)